

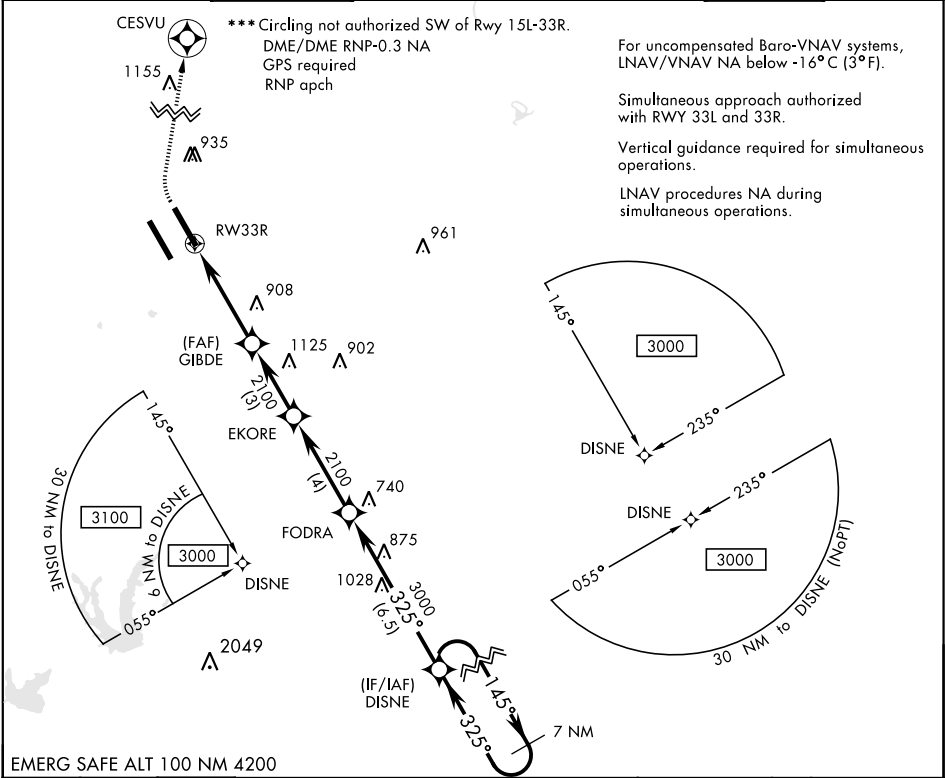
RNAV (GPS) RWY 33R

APCH CRS	Rwy Idg	8351
325°	TDZE	734
	Arpt Elev	761

AL-341 [USAF]

RANDOLPH AFB (KRND)

* When ALS inop, increase all CAT vis to 1 1/4 miles. ** When ALS inop, increase CAT AB RVR to 55 and vis to 1 mile, CAT CDE vis to 1 3/8 miles.			ALSF-1 		MISSED APPROACH: Climb to 1200 then climbing right turn to 3000 direct CESVU. Expect ATC instructions.	
ATIS ★	SAN ANTONIO APP CON	RANDOLPH TOWER ★	RANDOLPH GND CON	CLNC DEL (RWY 15L-33R)	HANGOVER ATIS ★	HANGOVER TOWER ★
290.525	128.05 318.1	128.25 294.7	119.65 275.8	338.35	327.8	120.5 291.1
						HANGOVER GND CON 124.75 353.75



EMERG SAFE ALT 100 NM 4200

1200

↑

3000

↷

CESVU

⬇

↑ LNAV Only

↑ 1 NM to RW33R

RW33R

GIBDE

↖

EKORE

↖

FODRA

↖

DISNE

↖

325°

325°

145°

3000

325°

2100

2100

GS 3.04°

TCH 42

4.1 NM

3 NM

4 NM

6.5 NM

CATEGORY	A	B	C	D	E
LNAV/VNAV DA *	1080/40		346	(400-34)	
LNAV MDA **	1080/24	346 (400-½)	1080/30	346	(400-⅝)
CIRCLING ***	1180-1 419 (500-1)	1220-1 459 (500-1)	1260-1½ 499 (500-1½)	1800-3	1039 (1100-3)

ELEV 761

TDZE 734

RNAV (GPS) RWY 33R

SC-3, 31 DEC 2020 to 28 JAN 2021

SC-3, 31 DEC 2020 to 28 JAN 2021