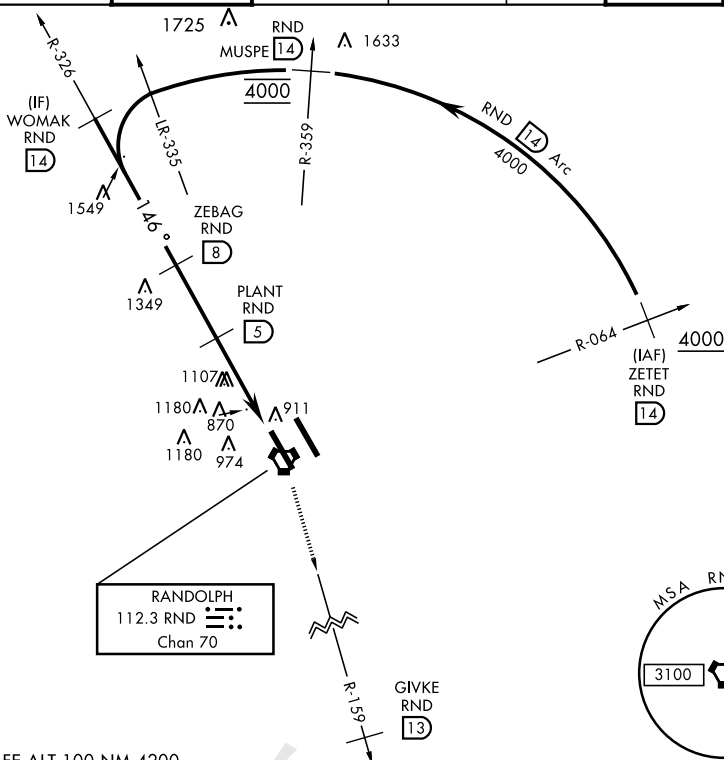
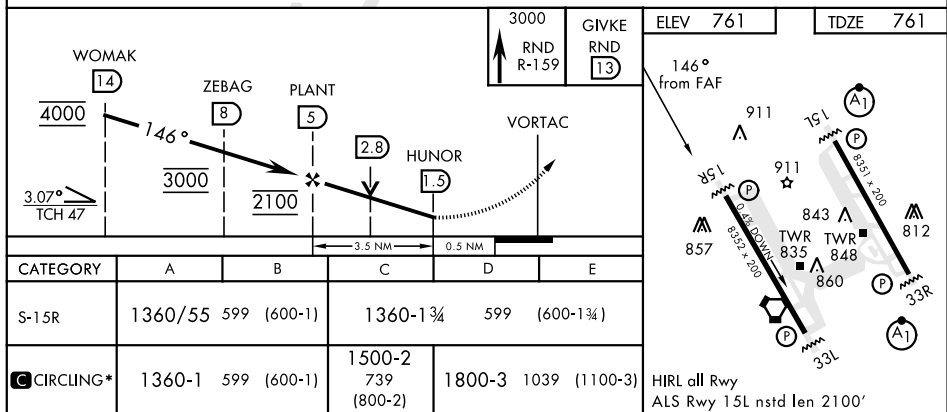


TACAN RWY 15R

VORTAC RND <b>112.3</b> Chan <b>70</b>		APCH CRS <b>146°</b>	Rwy Idg TDZE Arprt Elev <b>8352</b> <b>761</b> <b>761</b>	AL-341 [USAF]		RANDOLPH AFB (KRND)		
*Circling not authorized NE of Rwy 15R-33L.				MISSED APPROACH: Climb to 3000 out RND VORTAC R-159 to 13 DME (GYVKE). Expect ATC instructions.				
ATIS ★	SAN ANTONIO APP CON	RANDOLPH TOWER ★	RANDOLPH GND CON	CLNC DEL (RWY 15L-33R)	HANGOVER ATIS ★	HANGOVER TOWER ★	HANGOVER GND CON	
<b>290.525</b>	<b>128.05 318.1</b>	<b>128.25 294.7</b>	<b>119.65 275.8</b>	<b>338.35</b>	<b>327.8</b>	<b>120.5 291.1</b>	<b>124.75 353.75</b>	



EMERG SAFE ALT 100 NM 4200



UNIVERSAL CITY, TEXAS

29°32'N-98°17'W

RANDOLPH AFB (KRND)

Orig 25MAY17

TACAN RWY 15R

SC-3, 31 DEC 2020 to 28 JAN 2021

SC-3, 31 DEC 2020 to 28 JAN 2021