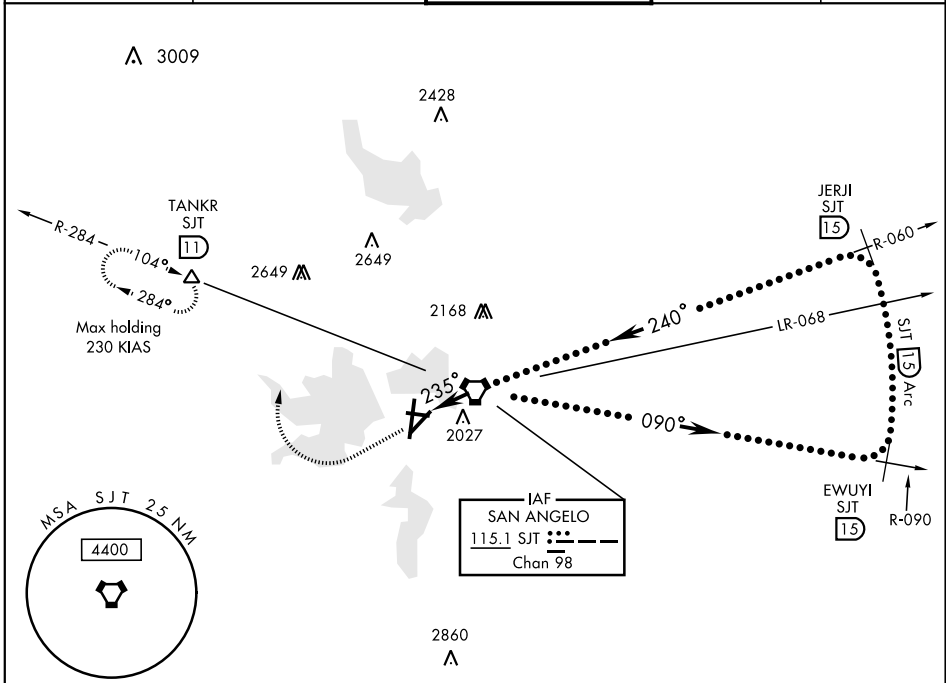
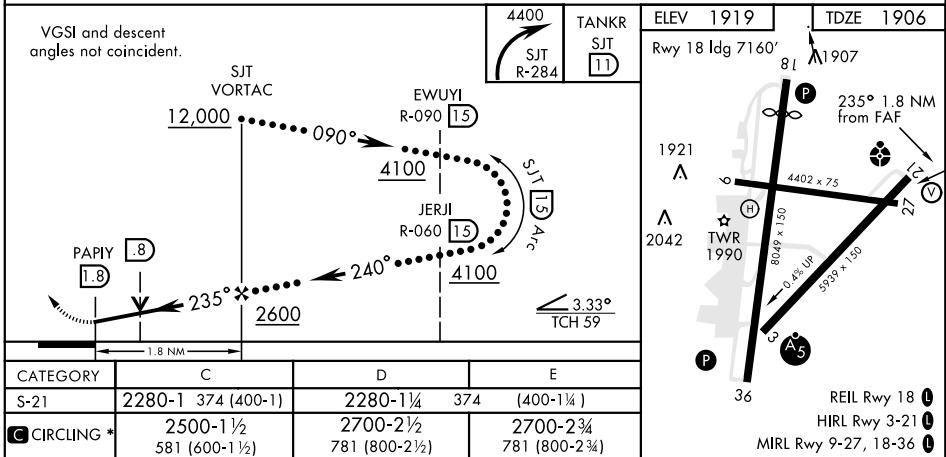


HI-VOR/DME or TACAN RWY 21

VORTAC SJT <b>115.1</b> Chan <b>98</b>	APCH CRS <b>235°</b>	Rwy ldg <b>5939</b> TDZE <b>1906</b> Arpt Elev <b>1919</b>	JAL-367 [USAF]	SAN ANGELO REGIONAL/MATHIS FIELD (KSJT)	
* Circling NA for CAT E W of Rwy 18-36.			ODALS	MISSED APPROACH: Climbing right turn to 4400 on SJT VORTAC R-284 to TANKR INT/SJT 11 DME and hold.	
ATIS <b>128.45 319.0</b>	SAN ANGELO APP CON <b>125.35 354.1</b>	MATHIS TOWER ★ <b>118.3 0</b> (CTAF) <b>284.7</b>	GND CON <b>121.9 348.6</b>	ASR	



EMERG SAFE ALT 100 NM 5100



HI-VOR/DME or TACAN RWY 21