


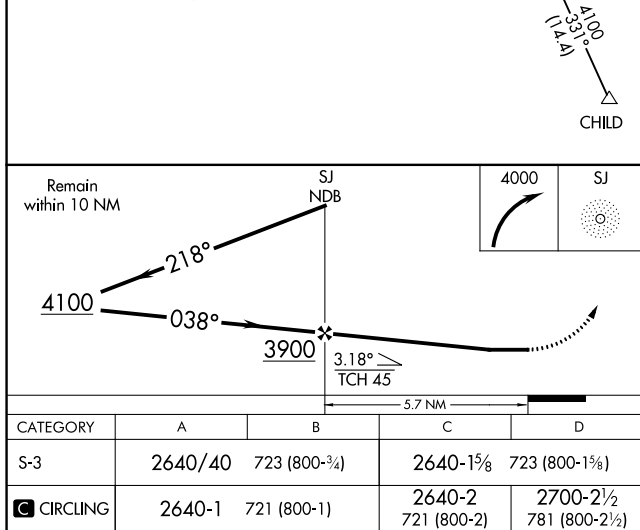
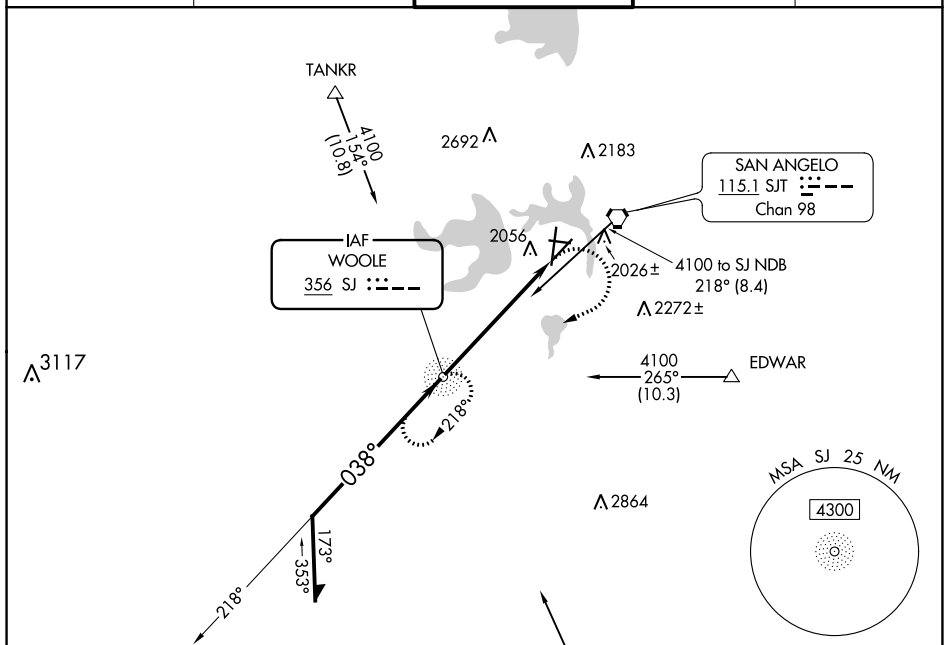



NDB SJ <b><u>356</u></b>	APP CRS <b>038°</b>	Rwy Idg <b>5940</b> TDZE <b>1917</b> Apt Elev <b>1919</b>
-----------------------------	------------------------	---

NDB RWY 3

SAN ANGELO RGNL/MATHIS FIELD (SJT)

  ASR	For inop ALS, increase Cat A/B visibility to RVR 5500, and Cat C/D to 2 SM.		 MALSR	MISSED APPROACH: Climbing right turn to 4000 direct SJ NDB and hold.	
	ATIS <b>128.45 319.0</b>	SAN ANGELO APP CON ★ <b>125.35 354.1</b>	MATHIS TOWER ★ <b>118.3 (CTAF) 0 284.7</b>	GND CON <b>121.9 348.6</b>	UNICOM <b>122.95</b>



CATEGORY	A	B	C	D
S-3	2640/40	723 (800-¾)	2640-1⅝	723 (800-1⅝)
 CIRCLING	2640-1	721 (800-1)	2640-2 721 (800-2)	2700-2½ 781 (800-2½)

ELEV 1919	D	TDZE 1917			
<p>MIRL Rwy 9-27 and 18-36 <span style="color: red;">L</span></p> <p>HIRL Rwy 3-21 <span style="color: red;">L</span></p> <p>REIL Rwy 18 <span style="color: red;">L</span></p>					
FAF to MAP 5.7 NM					
Knots	60	90	120	150	180
Min:Sec	5:42	3:48	2:51	2:17	1:54

SC-3, 31 DEC 2020 to 28 JAN 2021