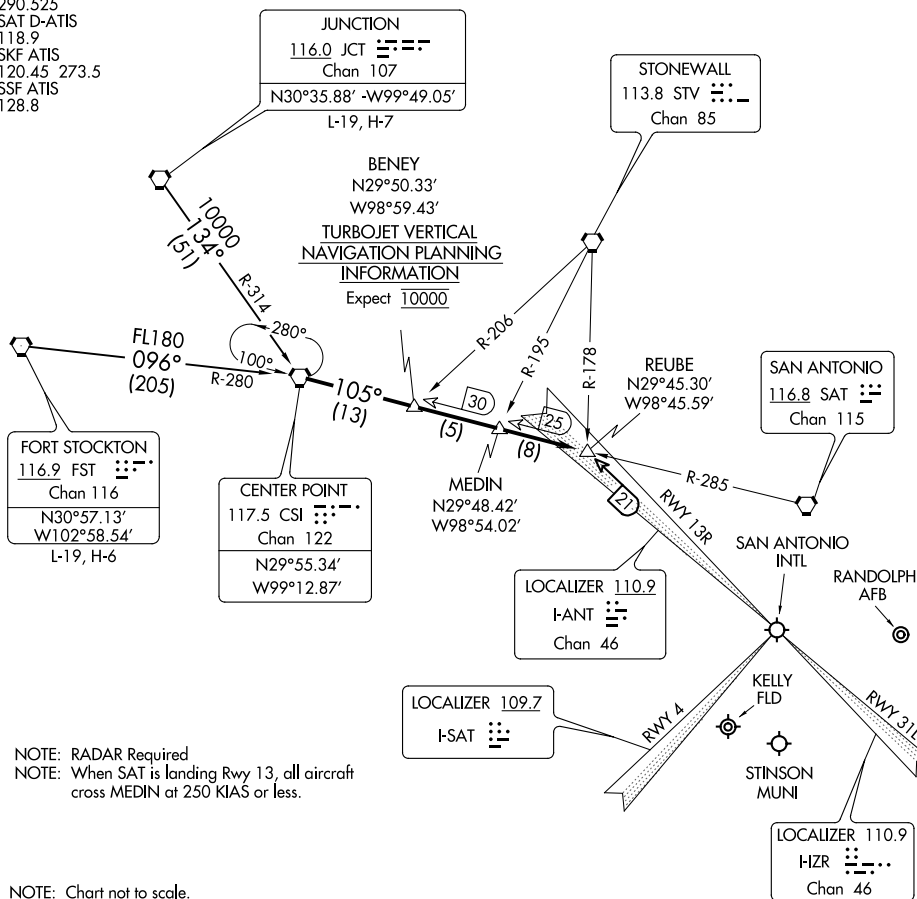


## CENTERPOINT TWO ARRIVAL

SAN ANTONIO, TEXAS

SAN ANTONIO APP CON  
125.1 307.0 (Rwys 13R and 22)  
125.7 290.225 (Rwys 4 and 31)  
KRND ATIS★  
290.525  
SAT D-ATIS  
118.9  
SKF ATIS  
120.45 273.5  
SSF ATIS  
128.8



NOTE: RADAR Required  
NOTE: When SAT is landing Rwy 13, all aircraft  
cross MEDIN at 250 KIAS or less.

NOTE: Chart not to scale.

## ARRIVAL ROUTE DESCRIPTION

FORT STOCKTON TRANSITION (FST.CSI2): From over FST VORTAC via FST R-096 and CSI R-280 to CSI VORTAC. Thence . . . .

JUNCTION TRANSITION (JCT.CSI2): From over JCT VORTAC via JCT R-134 and CSI R-314 to CSI VORTAC. Thence . . . .

... From over CSI VORTAC on CSI R-105 to REUBE INT. Expect vectors to final approach course.

## CENTERPOINT TWO ARRIVAL

SAN ANTONIO, TEXAS