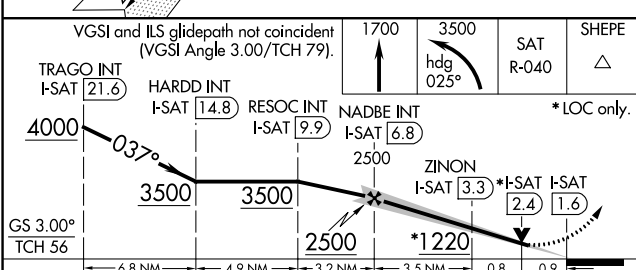
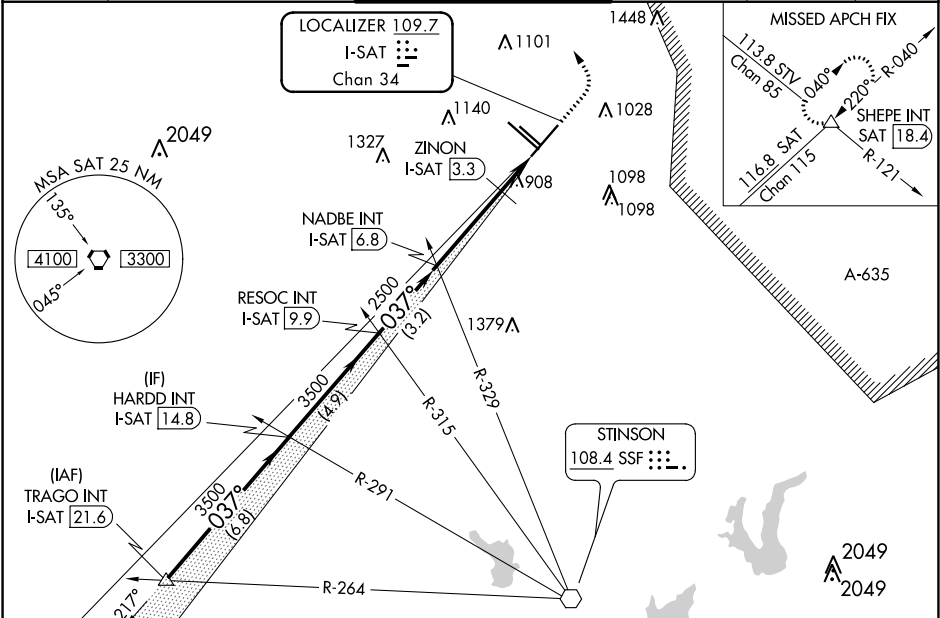


LOC/DME I-SAT 109.7 Chan 34	APP CRS 037°	Rwy ldg 8505 TDZE 786 Apt Elev 809
---	------------------------	---

ILS or LOC RWY 4
SAN ANTONIO INTL (SAT)

▼ Inop table does not apply to S-ILS 4. Circling NA west of Rwy 4 and 13R. Autopilot coupled approach NA below 1189. For inop ALS, increase S-LOC 4 Cat D visibility to 1¼ SM. ZINON fix minimums: for inop ALS, increase S-LOC 4 Cat D visibility to RVR 5000.	MALS 	MISSED APPROACH: Climb to 1700 then climbing left turn to 3500 on heading 025° and SAT VORTAC R-040 to SHEPE INT/SAT 18.4 DME and hold.
---	----------	---

D-ATIS 118.9	SAN ANTONIO APP CON 125.1 307.0	SAN ANTONIO TOWER 119.8 257.8	GND CON 121.9 348.6	CLNC DEL 126.7	CPDLC
------------------------	---	---	-------------------------------	--------------------------	-------



CATEGORY	A	B	C	D
S-ILS 4	986/40		200 (200-¾)	
S-LOC 4	1220/40	434 (500-¾)	1220/50	434 (500-1)
CIRCLING	1300-1	491 (500-1)	1320-1½ 511 (600-1½)	1380-2 571 (600-2)
ZINON FIX MINIMUMS (DME REQUIRED)				
S-LOC 4	1120/40		334 (400-¾)	
CIRCLING	1300-1	491 (500-1)	1320-1½ 511 (600-1½)	1380-2 571 (600-2)

ELEV 809	TDZE 786
TDZ/CL Rwy 13R REIL Rwy 13L, 22 and 31R HRL Rwy 4-22 and 13R-31L MRL Rwy 13L-31R	
FAF to MAP 5.2 NM	
Knots	60 90 120 150 180
Min:Sec	5:12 3:28 2:36 2:05 1:44

SC-3, 31 DEC 2020 to 28 JAN 2021

SC-3, 31 DEC 2020 to 28 JAN 2021