

(MILET4.MILET) 18032

AL-369 (FAA)

SAN ANTONIO INTL (SAT)
SAN ANTONIO, TEXAS

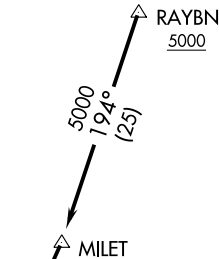
MILET FOUR DEPARTURE (RNAV)

D-ATIS 118.9
CLNC DEL 126.7
CPDLC
GND CON
121.9 348.6
SAN ANTONIO DEP CON
125.1 307.0 (Rwy 04)
125.7 290.225 (Rwys 13/22/31)
SAN ANTONIO TOWER
119.8 257.8

TOP ALTITUDE:
5000



- NOTE: RNAV 1.
NOTE: RADAR required.
NOTE: DME/DME/IRU or GPS required.
NOTE: For non-GPS equipped aircraft SAT,
THX, and COT DME's must be
operational.



TAKEOFF MINIMUMS
Rwys 4, 13L, 13R, 22, 31L, 31R: Standard.

LAREDO
LRD

NOTE: Chart not to scale.



DEPARTURE ROUTE DESCRIPTION

TAKEOFF RWYS 4, 13L, 13R, 22, 31L, 31R:
Climb on assigned heading for RADAR vectors to RAYBN,
thence. . . .
...On depicted route to LRD VORTAC, maintain 5000.
Expect filed altitude 10 minutes after departure.

MILET FOUR DEPARTURE (RNAV)
(MILET4.MILET) 02MAR17

SAN ANTONIO, TEXAS
SAN ANTONIO INTL (SAT)

SC-3, 31 DEC 2020 to 28 JAN 2021

SC-3, 31 DEC 2020 to 28 JAN 2021