

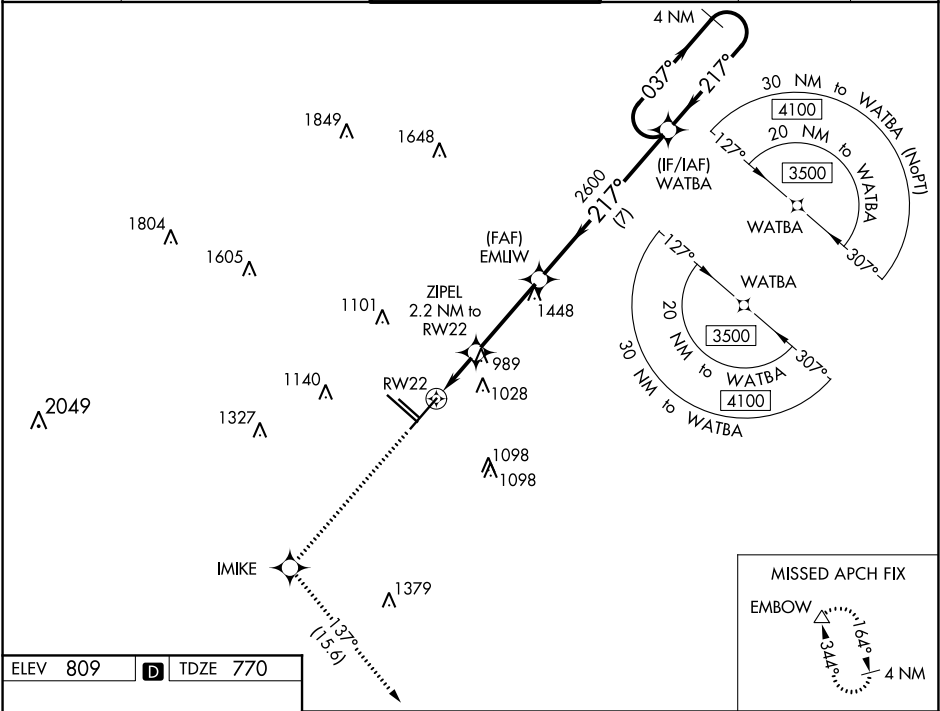
WAAS CH <b>69430</b> <b>W22A</b>	APP CRS <b>217°</b>	Rwy Idg TDZE <b>8505</b> <b>770</b> Apt Elev <b>809</b>
--	------------------------	--

RNAV (GPS) Y RWY 22  
SAN ANTONIO INTL (SAT)

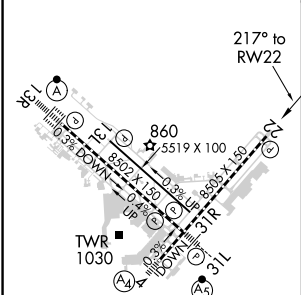
For uncompensated Baro-VNAV systems, LNAV/VNAV NA below -4°C (25°F) or above 54°C (130°F). Circling NA west of Rwy 4 and 13R. DME/DME RNP-0.3 NA.

MISSED APPROACH: Climb to 3100 direct IMIKE and track 137° to EMBOW and hold.

D-ATIS <b>118.9</b>	SAN ANTONIO APP CON <b>125.1 307.0</b>	SAN ANTONIO TOWER <b>119.8 257.8</b>	GND CON <b>121.9 348.6</b>	CLNC DEL <b>126.7</b>	CPDLC
------------------------	---	---	-------------------------------	--------------------------	-------



ELEV 809	D	TDZE 770
----------	---	----------



3100	IMIKE	tr 137°	EMBOW	VGSI and RNAV glidepath not coincident (VGSI Angle 3.00/TCH 85).	4 NM
*LNAV only.				WATBA	Holding Pattern
ZIPEL 2.2 NM to RW22				GP 3.00° TCH 55	
*1.3 NM to RW22				3500	
*1500				2600	
1.3 NM				0.9 NM	
3.4 NM				7 NM	
CATEGORY	A	B	C	D	
LPV	DA	970-3/4	200 (200-3/4)		
LNAV/VNAV	DA	1225-1 5/8	455 (500-1 5/8)		
LNAV	MDA	1240-1 470 (500-1)	1240-1 3/8 470 (500-1 3/8)		
CIRCLING	1300-1 491 (500-1)		1320-1 1/2 511 (600-1 1/2)	1380-2 571 (600-2)	

TDZ/CL Rwy 13R  
REIL Rwy 13L, 22 and 31R  
HIRL Rwy 4-22 and 13R-31L  
MIRL Rwy 13L-31R