

WAAS CH <b>77613</b> <b>W04A</b>	APP CRS <b>037°</b>	Rwy Idg TDZE <b>786</b> Apt Elev <b>809</b>
--	------------------------	---

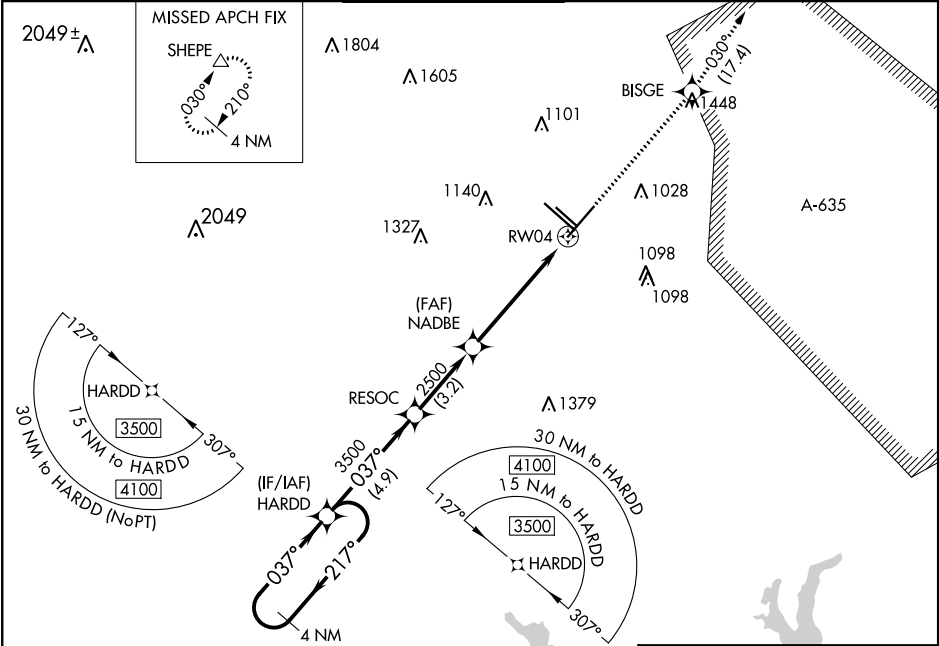
**RNAV (GPS) Y RWY 4**  
SAN ANTONIO INTL (SAT)

**⚠** Inop table does not apply to LPV. For uncompensated Baro-VNAV systems, LNAV/VNAV NA below -4°C (25°F) or above 54°C (130°F). Circling NA west of Rwy 4 and 13R. DME/DME RNP-0.3 NA. For inop ALS, increase LNAV/VNAV all Cats and LNAV Cats C and D visibility to 1½.

MALS  
**A4**

**MISSED APPROACH:** Climb to 3500 direct BISGE and track 030° to SHEPE and hold.

D-ATIS <b>118.9</b>	SAN ANTONIO APP CON <b>125.1 307.0</b>	SAN ANTONIO TOWER <b>119.8 257.8</b>	GND CON <b>121.9 348.6</b>	CLNC DEL <b>126.7</b>	CPDLC
------------------------	---	---	-------------------------------	--------------------------	-------



ELEV 809 **D** TDZE 786

TDZ/CL Rwy 13R  
REIL Rwy 12L, 22 and 31R  
HIRL Rwy 4-22 and 13R-31L  
MIRL Rwy 13L-31R

VGSI and RNAV glidepath not coincident (VGSI Angle 3.00/TCH 79).			
4 NM Holding Pattern	HARDD	RESOC	
3500 ← 217°	037° →	037° →	3500
GP 3.00° TCH 56		2500	
	4.9 NM	3.2 NM	3.9 NM
CATEGORY	A	B	C
LPV DA	986/40 200 (200-¾)		
LNAV/VNAV DA	1201/60 415 (400-1¼)		
LNAV MDA	1280/40 494 (500-¾)	1280/60 494 (500-1¼)	
CIRCLING	1300-1 491 (500-1)	1320-1½ 511 (600-1½)	1380-2 571 (600-2)

SC-3, 31 DEC 2020 to 28 JAN 2021

SC-3, 31 DEC 2020 to 28 JAN 2021