

HI-ILS or LOC/DME Z RWY 16

LOC I-SKF 110.1	APCH CRS 158°	Rwy ldg 11,550 TDZE 690 Arprt Elev 690
---------------------------	-------------------------	---

JAL-371 [USAF]

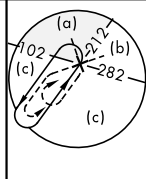
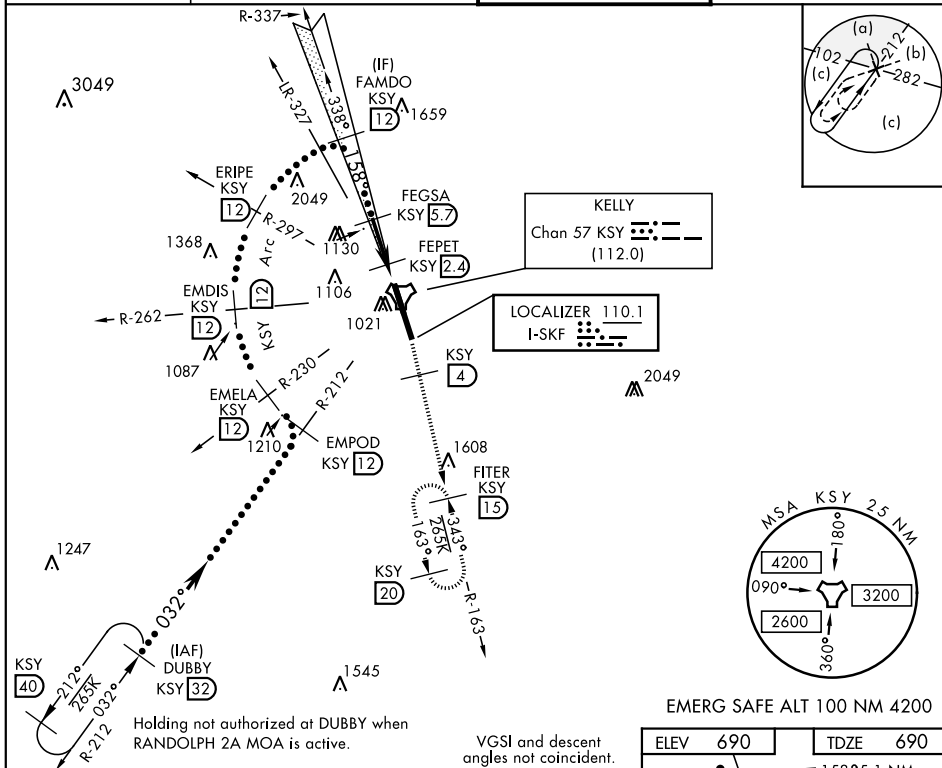
KELLY FLD (KSKF)

- ▼ *When ALS inop, increase RVR to 40 and vis to $\frac{3}{4}$ mile.
 **When ALS inop, increase RVR to 60 and vis to $1\frac{1}{2}$ miles.
 ***Circling not authorized E of Rwy 16-34.



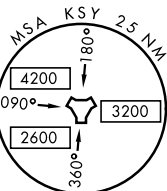
MISSED APPROACH: Climb to 2500 via KSY R-163 until 4 DME, then continue climb to 3000 to FITER/1.5 DME and hold.

ATIS 120.45 273.5	SAN ANTONIO APP CON 118.05 353.5	KELLY TOWER 124.3 322.35	GND CON 121.8 289.4
-----------------------------	--	------------------------------------	-------------------------------



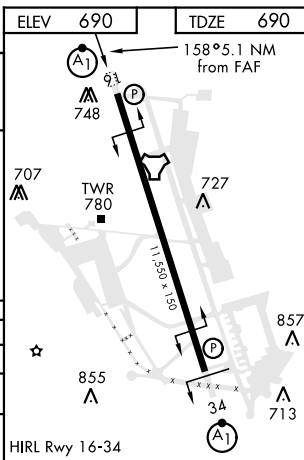
KELLY
Chan 57 KSY
(112.0)

LOCALIZER 110.1
I-SKF



EMERG SAFE ALT 100 NM 4200

DUBBY R-212 32	EMPOD R-230 12	EMELA R-230 12	EMDIS R-262 12	ERIEPE R-297 12	FAMDO Intcp R-337 12	FEPSA 5.7	2500 KSY R-163 4	3000 FITER 1.5
17,000	15,000	6000	6000	3100	3100	2400	2400	2400
GS 3.00° TCH 57	Arc 12	158°	1340	1340	1340	1340	1340	1340
CATEGORY	C	D	E					
S-ILS 16 *	890/24	200	(200- $\frac{1}{2}$)					
S-LOC/ ** DME 16	1100/40	410	(500- $\frac{3}{4}$)					
*** CIRCLING	1360-1 $\frac{3}{4}$ 670 (700-1 $\frac{3}{4}$)	1440-2 $\frac{1}{2}$ 750 (800-2 $\frac{1}{2}$)	1900-3 1210 (1300-3)					



HI-ILS or LOC/DME Z RWY 16