

## HI-ILS or LOC/DME Z RWY 34

LOC I-OSQ <b>110.7</b>	APCH CRS <b>338°</b>	Rwy Idg <b>11,550</b> TDZE <b>660</b> Arpt Elev <b>690</b>	JAL-371 [USAF]	KELLY FLD (KSKF)
---------------------------	-------------------------	--	----------------	------------------

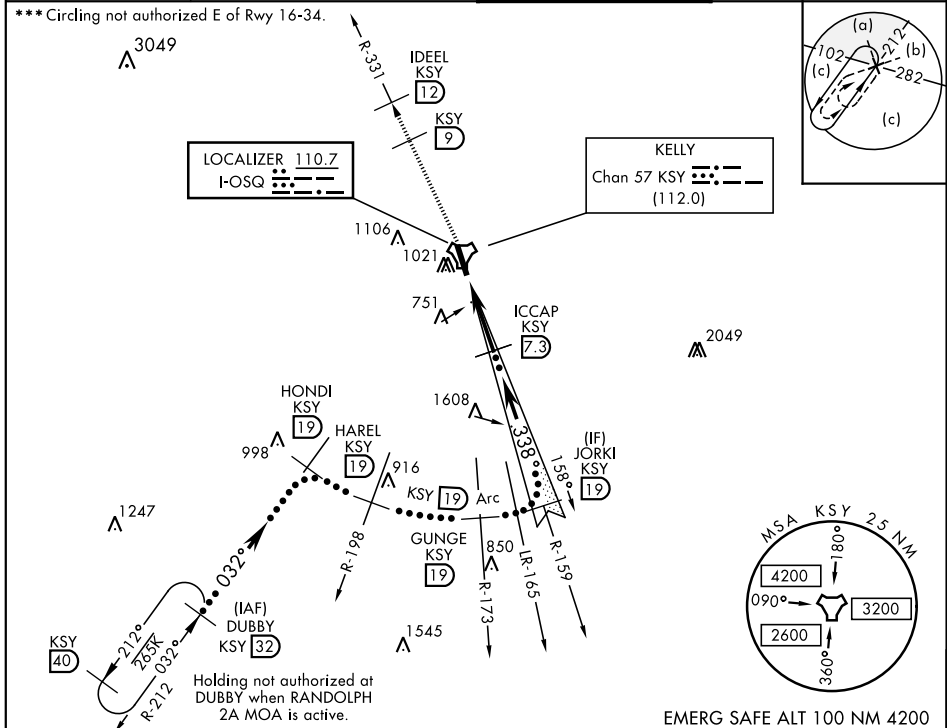
- ▼ \* When ALS inop, increase RVR to 40 and vis to  $\frac{3}{4}$  mile.  
 \*\* When ALS inop, increase RVR to 55 and vis to 1 mile.



MISSED APPROACH: Climbing to 2500 via KSY TACAN R-331 until 9 DME, cross 9 DME at 2500, then continue climb to 3000 to IDEEL/12.0 DME. Expect ATC instructions.

ATIS <b>120.45 273.5</b>	SAN ANTONIO APP CON <b>118.05 353.5</b>	KELLY TOWER <b>124.3 322.35</b>	GND CON <b>121.8 289.4</b>
-----------------------------	--	------------------------------------	-------------------------------

\*\*\* Circling not authorized E of Rwy 16-34.



2500 KSY R-331	KSY R-331 9	3000 IDEEL KSY 12	DUBBY R-212 32	ELEV 690	TDZE 660
VGSI and descent angles not coincident. TACAN JETKA 1.9 ICCAP 7.3 JORKE 19 HAREL 19 GUNGE 19 HONDI 19 DUBBY 32 GS 3.00° TCH 60					
CATEGORY	C	D	E		
S-ILS 34 *	860/24	200	(200-½)		
S-LOC/DME 34 **	1040/35	380	(400-¾)		
CIRCLING ***	1360-1¾ 670 (700-1¾)	1440-2½ 750 (800-2½)	1900-3 1210 (1300-3)	HIRL Rwy 16-34 338° 5.8 NM from FAF 855 A 857 A 713 A 727 A 707 A TWR 780 11.655 x 1.50 34	

## HI-ILS or LOC/DME Z RWY 34