

ILS or LOC/DME Y RWY 16

LOC I-SKF <u>110.1</u>	APCH CRS 158°	Rwy Ldg 11,550 TDZE 690 Arpt Elev 690
----------------------------------	-------------------------	--

AL-371 [USAF]

KELLY FLD (KSKF)

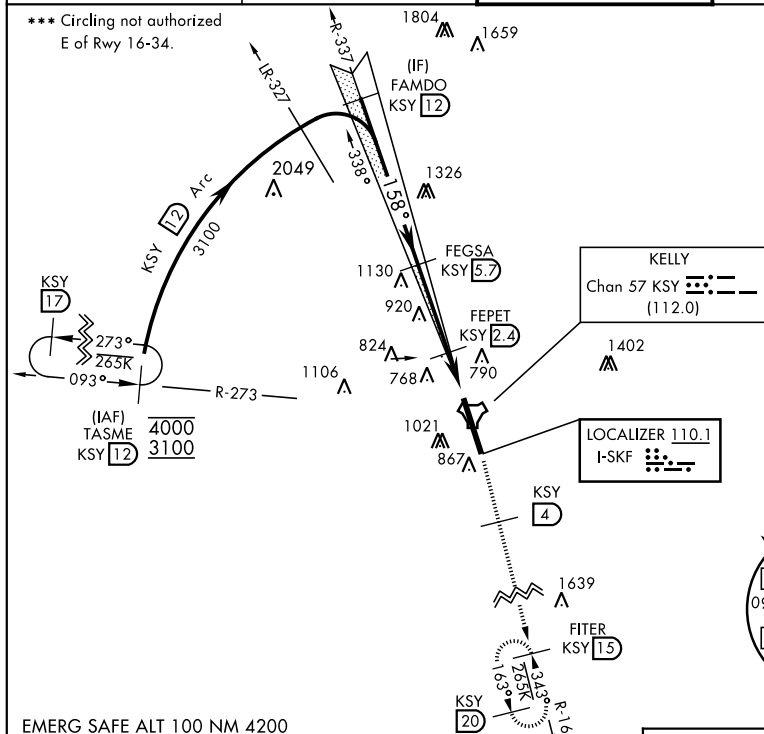
T*When ALS inop, increase RVR to 40 and vis to $\frac{3}{4}$ mile.
 **When ALS inop, increase CAT AB RVR to 55 and vis to 1 mile, CAT CDE RVR to 60 and vis to $1\frac{1}{8}$ miles.

ALSF-1

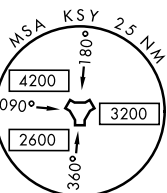
MISSED APPROACH: Climb to 2500 via KSY R-163 until 4 DME, then continue climb to 3000 to FITER/15 DME and hold. Non-TACAN equipped aircraft expect alternate missed approach instructions.

ATIS 120.45 273.5	SAN ANTONIO APP CON 118.05 353.5	KELLY TOWER 124.3 322.35	GND CON 121.8 289.4
----------------------	-------------------------------------	-----------------------------	------------------------

*** Circling not authorized
E of Rwy 16-34.



EMERG SAFE ALT 100 NM 4200



		← 3.3 NM		← 1.4 NM		← 5 NM	
CATEGORY	A	B	C	D	E		
S-ILS 16 *	890/24		200	(200-½)			
S-LOC/DME 16 **	1100/24	410 (500-½)	1100/40		410	(500-¾)	
C CIRCLING ***	1220-1 530 (600-1)	1300-1 610 (700-1)	1360-1¼ 670 (700-1¾)	1440-2½ 750 (800-2½)	1900-3 1210 (1300-3)		

ELEV 690 TDZE 690

158° 5.1 NM from FAF

9.1

748

707

TWR 780

727

740

11.500 x 150

855

877

713

HIRL Rwy 16-34

SAN ANTONIO, TEXAS

29° 23' N-98° 35' W

KELLY FLD (KSKF)

Amdt 1 13AUG20

ILS or LOC/DME Y RWY 16

SC-3, 31 DEC 2020 to 28 JAN 2021

SC-3, 31 DEC 2020 to 28 JAN 2021