

ILS or LOC/DME Y RWY 34

LOC I-OSQ <u>110.7</u>	APCH CRS 338°	Rwy Ldg 11,550 TDZE 660 Arpt Elev 690
----------------------------------	-------------------------	------------------------------------------------------------------

AL-371 [USAF]

KELLY FLD (KSKF)

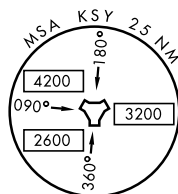
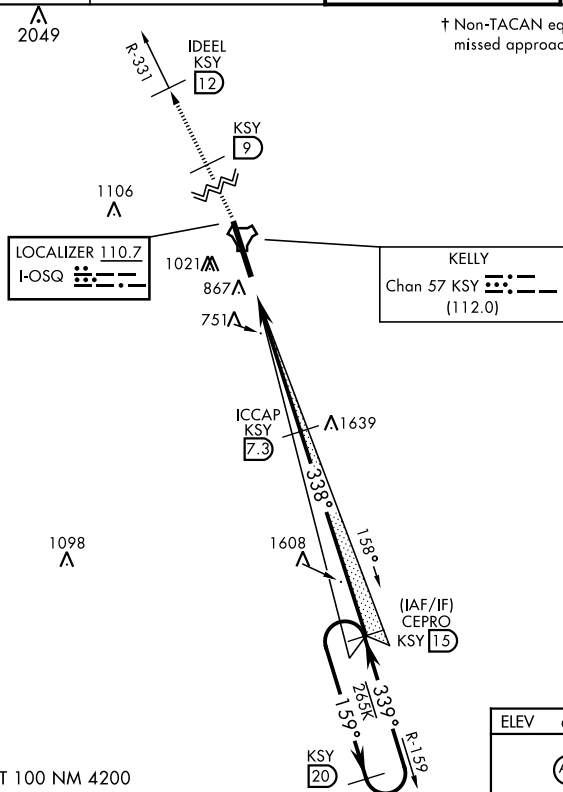
T * When ALS inop, increase RVR to 40 and vis to $\frac{3}{4}$ mile.
 ** When ALS inop, increase RVR to 55 and vis to 1 mile.
 *** Circling not authorized E of Rwy 16-34.

ALSF-1

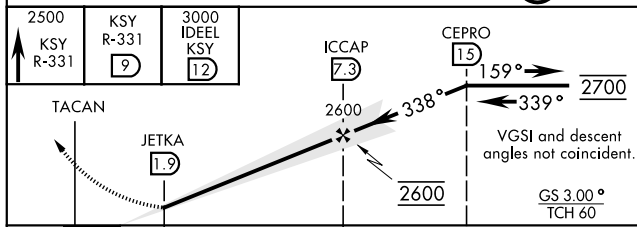
† MISSED APPROACH: Climb to 2500 via KSY
TACAN R-331 until 9 DME, cross 9 DME at 2500,
then continue climb to 3000 to IDEEL/12 DME.
Expect ATC instructions.

ATIS 120.45 273.5	SAN ANTONIO APP CON 118.05 353.5	KELLY TOWER 124.3 322.35	GND CON 121.8 289.4
-----------------------------	--------------------------------------------	------------------------------------	-------------------------------

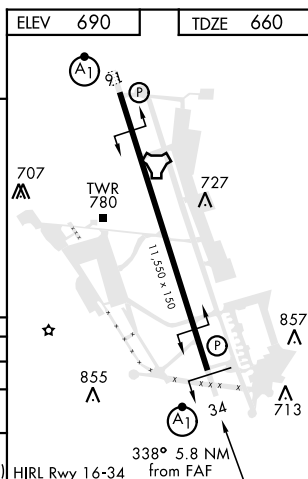
† Non-TACAN equipped aircraft expect alternate missed approach instructions.



EMERG SAFE ALT 100 NM 4200



	.5 NM		5.4 NM				
CATEGORY	A		B		C	D	E
S-ILS 34 *	860/24		200		(200-½)		
S-LOC/DME 34 **	1040/24 380 (400-½)		1040/35 380 (400-¾)				
C CIRCLING ***	1220-1 530 (600-1)	1300-1 610 (700-1)	1360-1¾ 670 (700-1¾)	1440-2½ 750 (800-2½)	1900-3 1210(1300-3)		



SAN ANTONIO, TEXAS

29°23'N-98°35'W

KELLY FLD (KSKF)

Amdt 1 13AUG20

ILS or LOC/DME Y RWY 34

SC-3, 31 DEC 2020 to 28 JAN 2021

SC-3, 31 DEC 2020 to 28 JAN 2021