

(BOWIE7.BOWIE) 20254  
BOWIE SEVEN DEPARTURE

AL-372 (FAA)

STINSON MUNI (SSF)  
SAN ANTONIO, TEXAS

ATIS  
128.8  
CLNC DEL  
121.7  
GND CON  
121.7 379.9  
SAN ANTONIO DEP CON  
125.7 290.225  
STINSON TOWER★  
118.2 379.9

SAN ANTONIO  
116.8 SAT  
Chan 115  
N29°38.64'  
W98°27.68'

COTULLA  
115.8 COT  
Chan 105

MILET  
N28°43.83'  
W98°47.88'

YENNS  
N29°04.08'  
W98°19.32'

THREE RIVERS  
111.4 THX  
Chan 51  
N28°30.30'  
W98°09.03'  
L-20, H-7

CORPUS CHRISTI  
115.5 CRP  
Chan 102  
N27°54.22'  
W97°26.69'  
L-20-21, H-7

LAREDO  
117.4 LRD  
Chan 121  
N27°28.72'  
W99°25.06'  
L-20, H-7

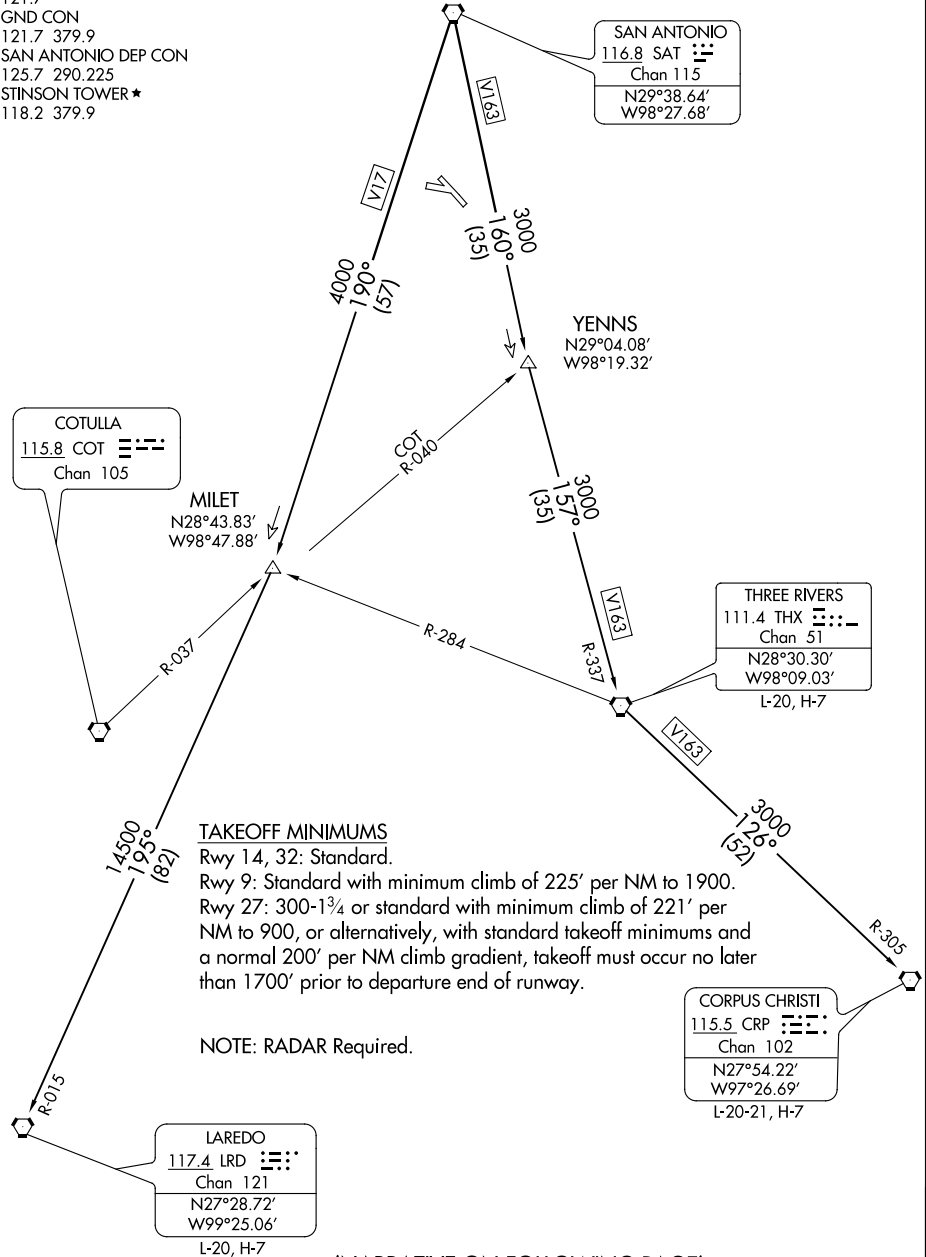
TAKEOFF MINIMUMS

Rwy 14, 32: Standard.

Rwy 9: Standard with minimum climb of 225' per NM to 1900.

Rwy 27: 300-1¾ or standard with minimum climb of 221' per NM to 900, or alternatively, with standard takeoff minimums and a normal 200' per NM climb gradient, takeoff must occur no later than 1700' prior to departure end of runway.

NOTE: RADAR Required.



NOTE: Chart not to scale

(NARRATIVE ON FOLLOWING PAGE)

BOWIE SEVEN DEPARTURE  
(BOWIE7.BOWIE) 02MAR17

SAN ANTONIO, TEXAS  
STINSON MUNI (SSF)

SC-3, 31 DEC 2020 to 28 JAN 2021

SC-3, 31 DEC 2020 to 28 JAN 2021