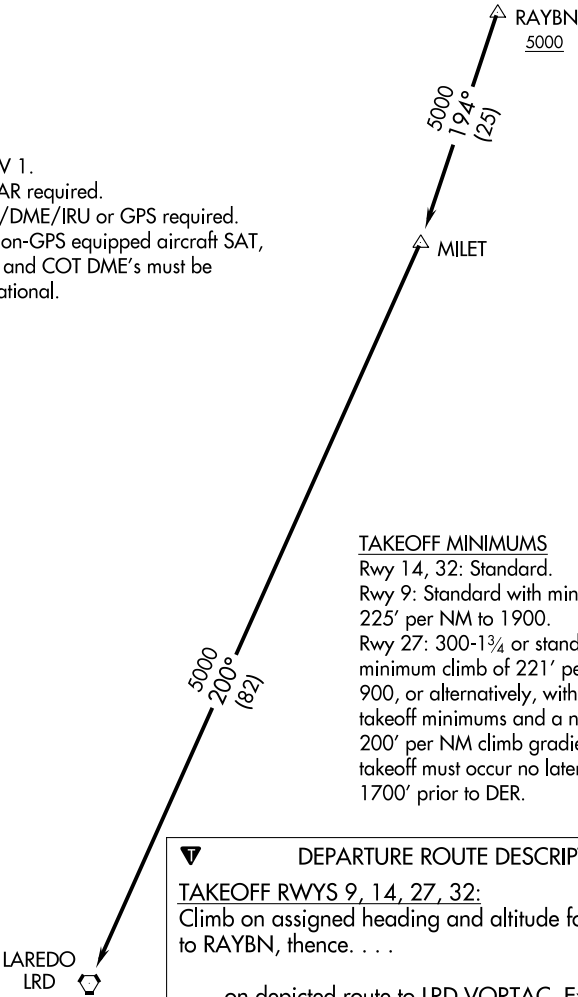


ATIS 128.8
CLNC DEL
121.7
GND CON
121.7 379.9
SAN ANTONIO DEP CON
125.7 290.225
STINSON TOWER★
118.2 379.9

- NOTE: RNAV 1.
NOTE: RADAR required.
NOTE: DME/DME/IRU or GPS required.
NOTE: For non-GPS equipped aircraft SAT, THX, and COT DME's must be operational.



TAKEOFF MINIMUMS
Rwy 14, 32: Standard.
Rwy 9: Standard with minimum climb of 225' per NM to 1900.
Rwy 27: 300-1¼ or standard with a minimum climb of 221' per NM to 900, or alternatively, with standard takeoff minimums and a normal 200' per NM climb gradient, takeoff must occur no later than 1700' prior to DER.

DEPARTURE ROUTE DESCRIPTION
TAKEOFF RWYS 9, 14, 27, 32:
Climb on assigned heading and altitude for RADAR vectors to RAYBN, thence. . . .
...on depicted route to LRD VORTAC. Expect filed altitude 10 minutes after departure.

SC-3, 31 DEC 2020 to 28 JAN 2021

SC-3, 31 DEC 2020 to 28 JAN 2021