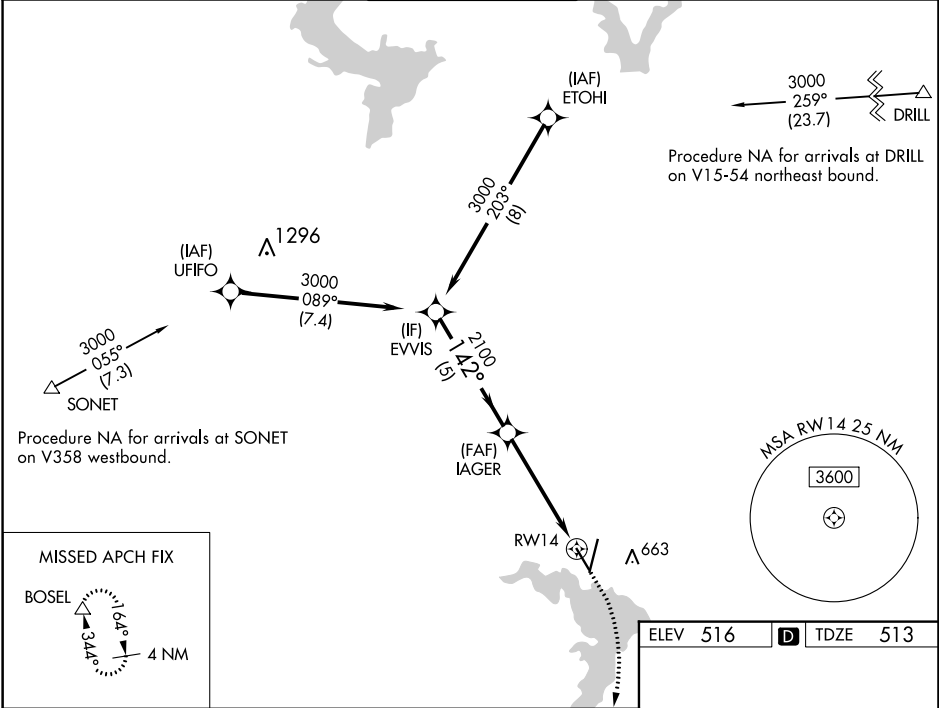


WAAS CH 56520 W14A	APP CRS 142°	Rwy Idg TDZE 513 Apt Elev 516
--	------------------------	---

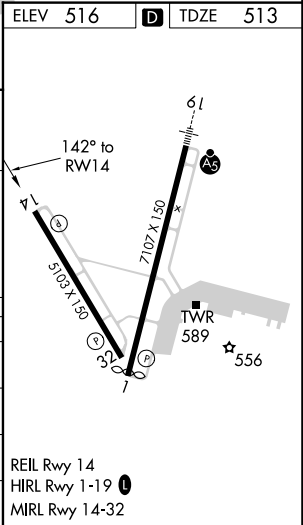
RNAV (GPS) RWY 14
WACO RGNL (ACT)

RNP APCH.	MISSED APPROACH: Climb to 1000 then climbing right turn to 4000 direct BOSEL and hold, continue climb-in-hold to 4000.
▼ ▲ ASR	Rwy 14 helicopter visibility reduction below ¾ SM NA. For uncompensated Baro-VNAV systems, procedure NA below -8°C or above 54°C.

ATIS 123.85	WACO APP CON * 127.65 227.125	WACO TOWER * 119.3 (CTAF) 0 257.8	GND CON 121.9	UNICOM 122.95
-----------------------	---	---	-------------------------	-------------------------



VGSi and RNAV glidepath not coincident (VGSi Angle 3.00/TCH 58).				
CATEGORY	A	B	C	D
LPV DA	763-¾ 250 (300-¾)			
LNAV/VNAV DA	763-¾ 250 (300-¾)			
LNAV MDA	1020-1	507 (600-1)	1020-1¾	507 (600-1¾)
CIRCLING	1020-1	504 (600-1)	1020-1½ 504 (600-1½)	1160-2 644 (700-2)



SC-3, 31 DEC 2020 to 28 JAN 2021

SC-3, 31 DEC 2020 to 28 JAN 2021