

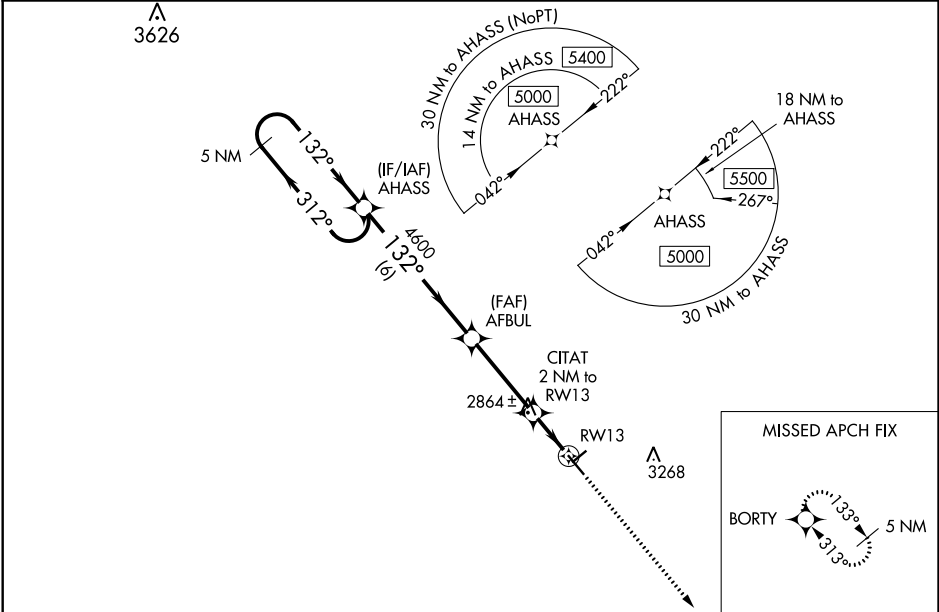
WAAS CH 93831 W13A	APP CRS 132°	Rwy Idg TDZE Apt Elev	5003 2822 2822
--	------------------------	-----------------------------	---

RNAV (GPS) RWY 13
WINKLER COUNTY (INK)

⚠ Baro-VNAV NA when using Pecos altimeter setting. For uncompensated Baro-VNAV systems, LNAV/VNAV NA below -20°C (-4°F) or above 54°C (130°F). DME/DME RNP-0.3 NA. VDP NA with Pecos altimeter setting. Helicopter visibility reduction below 3/4 SM NA. When local altimeter setting not received, use Pecos altimeter setting and increase all DA 95 feet and all MDA 100 feet. Increase LPV and LNAV/VNAV all Cats visibility 3/8 mile, LNAV and Circling Cat C visibility 1/4 mile.

MISSED APPROACH:
Climb to 5000 direct BORTY and hold.

AWOS-3 118.325	FORT WORTH CENTER 133.1 298.95	UNICOM 123.0 (CTAF) 0
--------------------------	--	---------------------------------



5 NM Holding Pattern		VGSI and RNAV glidepath not coincident (VGSI Angle 3.00/TCH 22).		5000	BORTY
AHASS		AFBUL		CITAT 2 NM to RW13	
5000		4600		* 0.8 NM to RW13	
GP 3.00°		4600		RW13	
TCH 45		* 3500		* LNAV only	
6 NM		3.4 NM		1.2 NM	
CATEGORY		A		B	
LPV DA		3072-3/4		250 (300-3/4)	
LNAV/VNAV DA		3072-3/4		250 (300-3/4)	
LNAV MDA		3120-1		298 (300-1)	
CIRCLING		3280-1		458 (500-1)	
				3120-7/8	
				298 (300-7/8)	
				3580-2 1/4	
				758 (800-2 1/4)	