

LOC/DME I-ALI	APP CRS	Rwy Idg	5997
109.3	308°	TDZE	174
Chan 30		Apt Elev	178

LOC/DME RWY 31

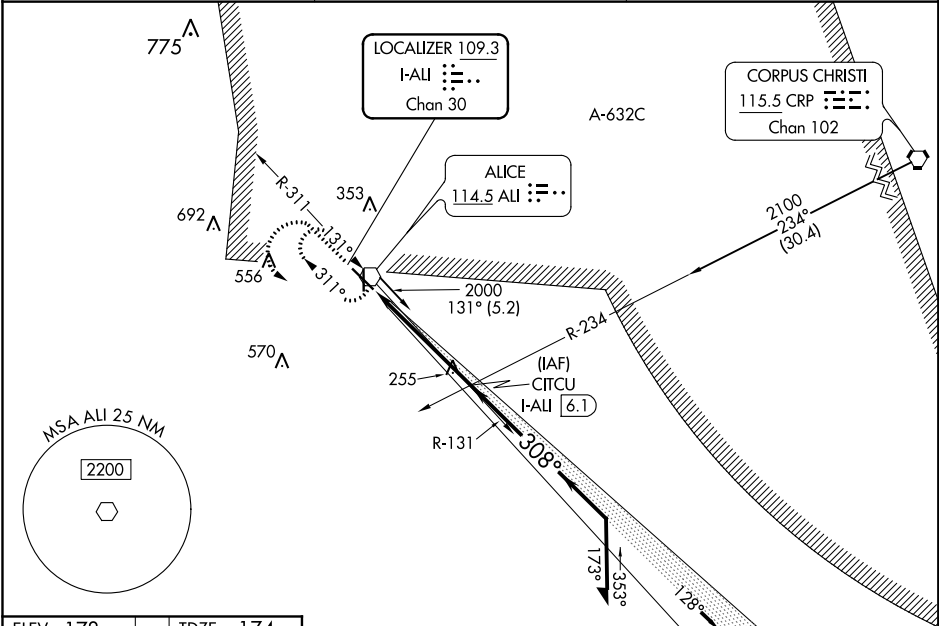
ALICE INTL (ALI)

When local altimeter setting not received, use Nueces County altimeter setting: increase all MDAs 60 feet and visibility Cats C and D ¼ mile. VDP NA when using Nueces County altimeter setting. For inop MALS increase S-31 Cats C, D visibility to 1 mile. For inop MALS with Nueces County altimeter setting increase S-31 Cats C, D visibility to ½ mile.

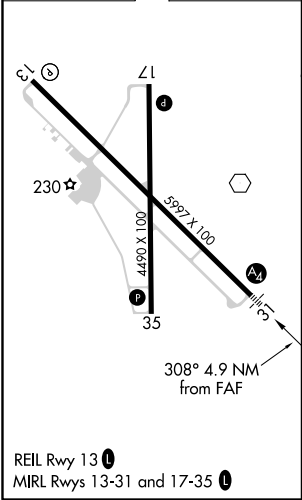
MALS

MISSED APPROACH: Climb to 1500 then climbing left turn to 2000 direct ALI VOR and hold.

ASOS	KINGSVILLE APP CON ★	UNICOM
119.225	119.9 290.45	123.0 (CTAF) 0



ELEV 178	TDZE 174
----------	----------



RADAR required for procedure entry from Corpus Christi CRP VORTAC.

