

WAAS CH 42629 W13A	APP CRS 128°	Rwy Idg TDZE Apt Elev	5997 178 178
--	------------------------	-----------------------------	---

RNAV (GPS) RWY 13

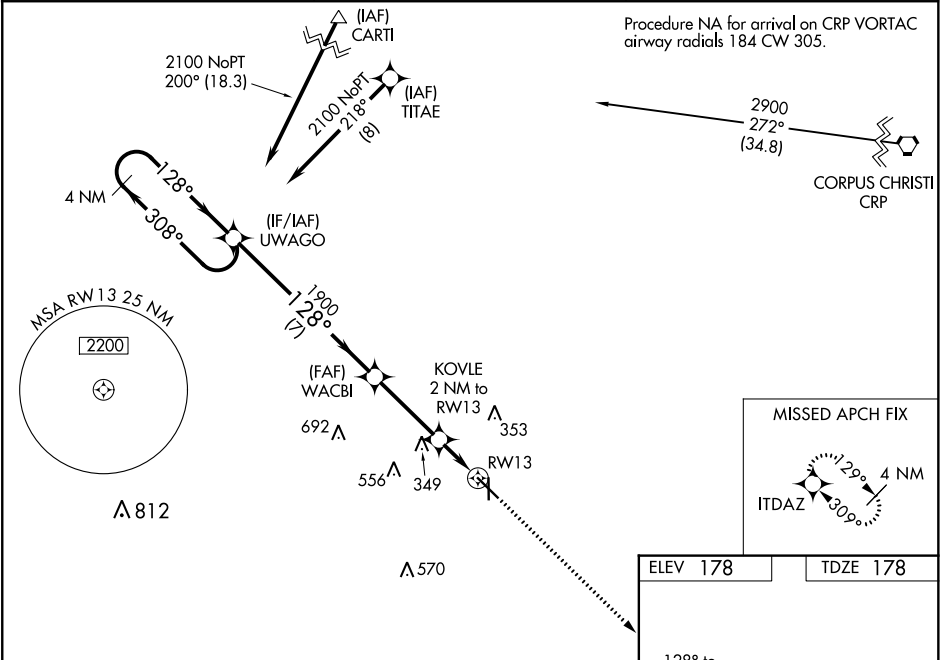
ALICE INTL (ALI)

RNP APCH.

Baro-VNAV NA when using Nueces County altimeter setting. For uncompensated Baro-VNAV systems, LNAV/VNAV NA below -3°C or above 42°C. When local altimeter setting not received, use Nueces County altimeter setting and increase all DA 56 feet and all MDA 60 feet, increase LPV and LNAV/VNAV visibility all Cats ¼ mile and LNAV Cat C and D ½ mile. Rwy 13 helicopter visibility reduction below ¾ SM NA. VDP NA with Nueces County altimeter setting.

MISSED APPROACH: Climb to 2600 direct ITDAZ and hold.

ASOS 119.225	KINGSVILLE APP CON ★ 119.9 290.45	UNICOM 123.0 (CTAF) 0
------------------------	---	---------------------------------



4 NM Holding Pattern

GP 3.00° TCH 50

2100 ← 308° 128° → 1900

WACBI 1900

KOVLE 2 NM to RW13

*1 NM to RW13

*860

7 NM 3.3 NM 1 NM 1 NM

CATEGORY	A	B	C	D
LPV DA	428-¾ 250 (300-¾)			
LNAV/VNAV DA	428-¾ 250 (300-¾)			
LNAV MDA	560-1 382 (400-1)		560-1½ 382 (400-1½)	

2600 ITDAZ

128° to RW13

230

5997 X 100

35

REIL Rwy 13

MIRL Rwy 13-31 and 17-35

SC-3, 31 DEC 2020 to 28 JAN 2021

SC-3, 31 DEC 2020 to 28 JAN 2021