
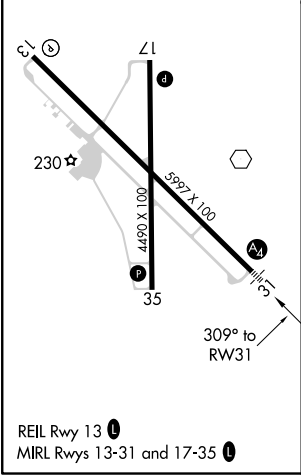
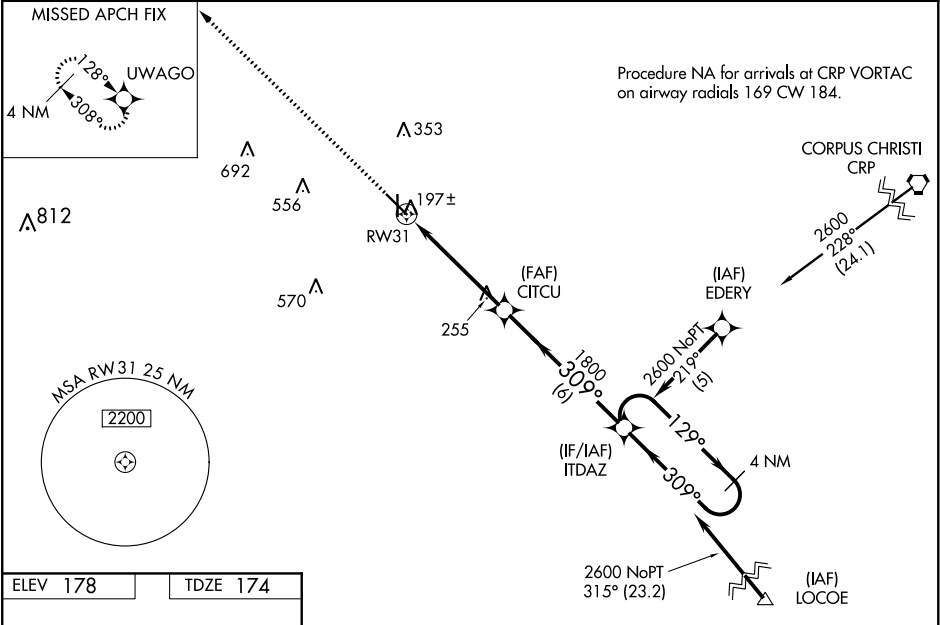


WAAS CH <b>81813</b> <b>W31A</b>	APP CRS <b>309°</b>	Rwy Idg TDZE Apt Elev	<b>5997</b> <b>174</b> <b>178</b>
--	------------------------	-----------------------------	---

RNAV (GPS) RWY 31  
ALICE INTL (ALI)

<p><b>▽</b> For uncompensated Baro-VNAV systems, LNAV/VNAV NA below -15°C (5°F) or above 48°C (118°F). DME/DME RNP-0.3 NA. Visibility reduction by helicopters NA. When local altimeter setting not received, use Nueces County altimeter setting: increase DA by 56 feet and visibility LNAV/VNAV all Cats to ¾ mile; increase all MDA 60 feet and LNAV visibility Cat C, D to 1 mile. For inop MALS, increase LPV all Cats visibility to ¾ mile. For inop MALS with Nueces County altimeter setting, increase LNAV/VNAV all Cats and LNAV Cats C, D visibility to 1 ½ mile. VDP NA when using Nueces County altimeter setting.</p>	<p><b>MALS</b></p> <p></p>	<p><b>MISSED APPROACH:</b> Climb to 2100 direct UWAGO and hold.</p>
--	---	---

<p><b>ASOS</b> <b>119.225</b></p>	<p><b>KINGSVILLE APP CON *</b> <b>119.9 290.45</b></p>	<p><b>UNICOM</b> <b>123.0 (CTAF) 0</b></p>
---------------------------------------	--	--



2100

↑

UWAGO

✦

\* LNAV only.

ITDAZ

4 NM Holding Pattern

129° →

← 309°

2600

GP 3.00°

TCH 47

CITCU

1800

309°

1800

\* 1 NM to RW31

RW31

1 NM

3.9 NM

6 NM

CATEGORY	A	B	C	D
LPV DA	437-¾	263 (300-¾)		
LNAV/VNAV DA	467-¾	293 (300-¾)		
LNAV MDA	520-¾	346 (400-¾)		
CIRCLING	600-1 422 (500-1)	640-1 462 (500-1)	660-1½ 482 (500-1½)	740-2 562 (600-2)

SC-3, 31 DEC 2020 to 28 JAN 2021

SC-3, 31 DEC 2020 to 28 JAN 2021