

WAAS CH 86232 W13A	APP CRS 126°	Rwy Idg TDZE 593 Apt Elev 595	5601
--	------------------------	---	-------------

RNAV (GPS) RWY 13

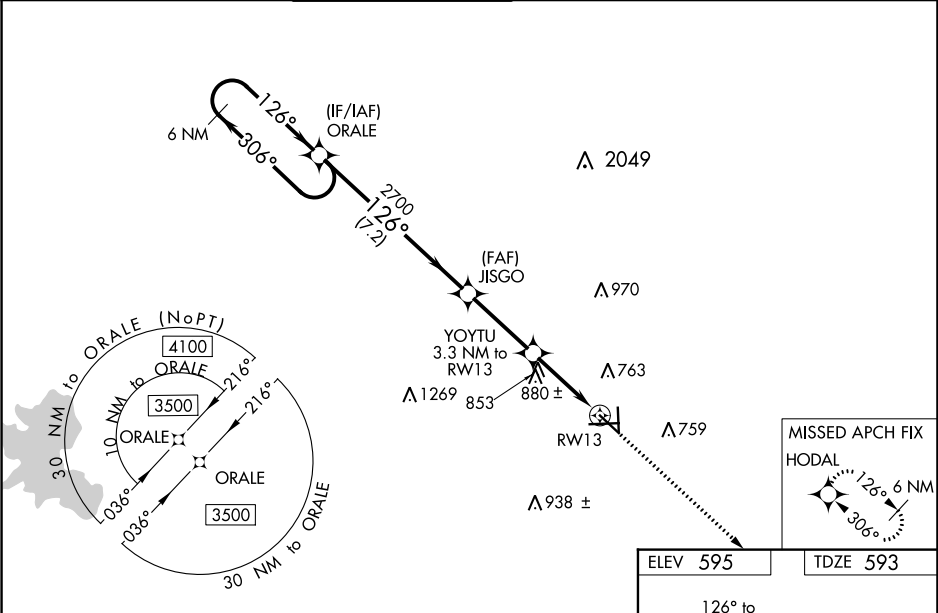
SAN MARCOS RGNL (HYI)

▼ Baro-VNAV NA when using New Braunfels altimeter setting. For uncompensated Baro-VNAV systems, LNAV/VNAV NA below -16°C (3°F) or above 54°C (130°F). When local altimeter setting not received, use New Braunfels altimeter setting and increase all DA 43 feet and all MDA 60 feet; increase LNAV/VNAV all Cats, LNAV Cat C/D/E and Circling Cat C/D visibility ½ mile. For inoperative MALSR, increase LPV Cat E visibility to ¾, LNAV/VNAV Cat E visibility to 1½ and LNAV Cat E visibility to 1½. For inoperative MALSR when using New Braunfels altimeter setting, increase LPV Cat E visibility to ¾, LNAV/VNAV Cat E visibility to 1½ and LNAV Cat E visibility to 1¾. Circling NA for Cat E SW of Rwy 13-31. DME/DME RNP-0.3 NA. VDP NA with New Braunfels altimeter setting.

MALSR

MISSED APPROACH:
Climb to 3000 direct
HODAL and hold.

ATIS ★ 120.825	AUSTIN APP CON 119.0 370.85	SAN MARCOS TOWER ★ 126.825 (CTAF)	GND CON 120.125	CLNC DEL 120.125	CLNC DEL 121.35 (when twr closed)
--------------------------	---------------------------------------	---	---------------------------	----------------------------	--



6 NM Holding Pattern

ORALE

3500 ← 306°

GP 3.00° TCH 57

JISGO 2700

YOYTU 3.3 NM to RW13

*1.5 NM to RW13

RW13

*1700

7.2 NM 3.1 NM 1.8 NM 1.5 NM

3000 HODAL

*LNAV only.

CATEGORY	A	B	C	D	E
LPV DA		793-½	200 (200-½)		
LNAV/VNAV DA		946-⅝	353 (400-⅝)		
LNAV MDA	1120-½	527 (600-½)	1120-1	527 (600-1)	
CIRCLING	1120-1	525 (600-1)	1240-1¾ 645 (700-1¾)	1320-2¼ 725 (800-2¼)	1340-2¾ 745 (800-2¾)

