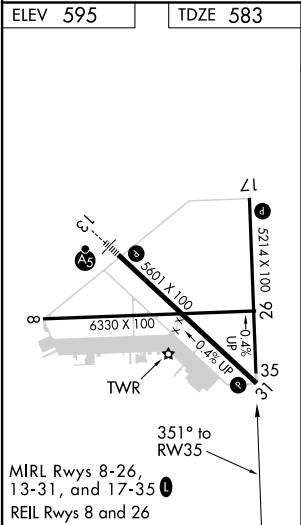
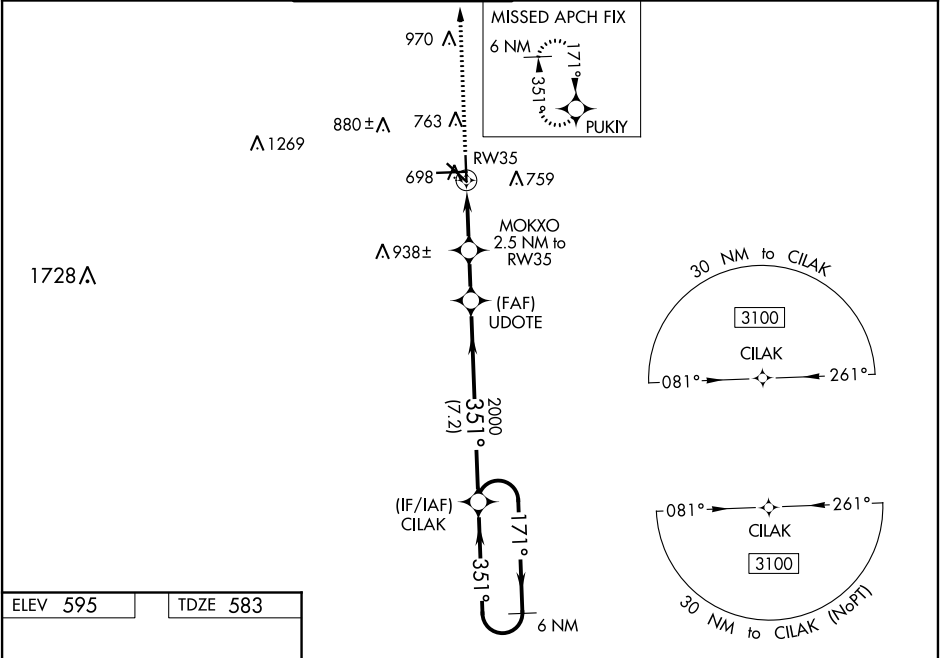


WAAS CH 70632 W35A	APP CRS 351°	Rwy Idg TDZE 583 Apt Elev 595
--	------------------------	---

RNAV (GPS) RWY 35
SAN MARCOS RGNL (HYI)

<p>⚠ Baro-VNAV NA when using New Braunfels altimeter setting. For uncompensated Baro-VNAV systems, LNAV/VNAV NA below -16°C (3°F) or above 54°C (130°F). When local altimeter setting not received, use New Braunfels altimeter setting and increase all DA 43 feet and all MDA 60 feet; increase LPV all Cats and LNAV/VNAV all Cats visibility 1/8 mile; and increase LNAV Cat C/D/E visibility and Circling Cat C/D visibility 1/4. Circling NA for Cat E SW of Rwy 13-31. DME/DME RNP-0.3 NA. VDP NA with New Braunfels altimeter setting.</p>					MISSED APPROACH: Climb to 3100 direct PUKIY and hold.
ATIS ★ 120.825	AUSTIN APP CON 119.0 370.85	SAN MARCOS TOWER ★ 126.825 (CTAF) 1	GND CON 120.125	CLNC DEL 120.125	CLNC DEL 121.35 (when twr closed)



3100 PUKIY		CILAK		6 NM Holding Pattern	
*LNAV only.		UDOTE		CILAK	
*1 NM to RW35		MOKXO 2.5 NM to RW35		CILAK	
1 NM		1.5 NM		1.8 NM	
1.5 NM		1.8 NM		7.2 NM	
CATEGORY		A		B	
LPV DA		833-3/4		250 (300-3/4)	
LNAV/VNAV DA		884-1		301 (300-1)	
LNAV MDA		960-1		960-1 3/8 377 (400-1 1/8)	
CIRCLING		1080-1		1120-1	
485 (500-1)		525 (600-1)		1240-1 3/4 1320-2 1/4 1340-2 3/4	
				645 (700-1 3/4) 725 (800-2 1/4) 745 (800-2 3/4)	

SC-3, 31 DEC 2020 to 28 JAN 2021

SC-3, 31 DEC 2020 to 28 JAN 2021