

LOC/DME I-VNK <b>110.5</b> Chan <b>42</b>	APP CRS <b>175°</b>	Rwy Idg <b>9000</b> TDZE <b>492</b> Apt Elev <b>542</b>	ILS RWY 17L (CAT II & III) AUSTIN-BERGSTROM INTL (AUS)
---	------------------------	---	---

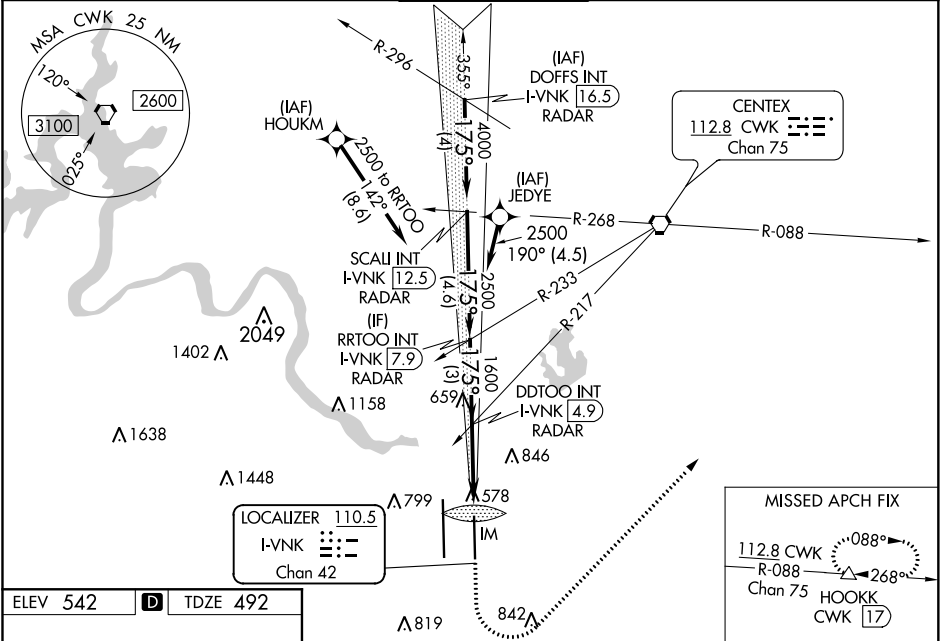
RNAV 1- GPS or RADAR required for procedure entry.  
DME required.  
From HOUKM, JEDYE: RNAV 1- GPS required.

ALSF-2

MISSED APPROACH: Climb to 1000, then climbing left turn to 3000 heading 040° and CWK VORTAC R-088 to HOOKK/CWK 17 DME and hold.

Simultaneous approach authorized.

D-ATIS <b>124.4</b>	AUSTIN APP CON <b>127.225 317.65</b> (EAST) <b>120.875 270.25</b> (SOUTH) <b>119.0 370.85</b> (WEST)	AUSTIN TOWER <b>121.0 281.5</b>	GND CON <b>121.9 348.6</b>	CLNC DEL <b>125.5 263.0</b>	CPDLC
------------------------	---	------------------------------------	-------------------------------	--------------------------------	-------



ELEV 542

TDZE 492

680

35L

35R

GS 3.00°

TCH 61

5000

4000

2500

1600

592

DOFFS INT I-VNK 16.5 RADAR

SCALI INT I-VNK 12.5 RADAR

RRTOO I-VNK 7.9 RADAR

DDTOO I-VNK 4.9 RADAR

IM

1000

3000

hdg 040°

CWK R-088

HOOKK

CATEGORY	A	B	C	D
S-ILS 17L	CAT II RA 105/12 100 DA 592			
S-ILS 17L	CAT III RVR 06			

CATEGORY II & III ILS - SPECIAL AIRCREW & AIRCRAFT CERTIFICATION REQUIRED