

APP CRS	Rwy Idg	7257
131°	TDZE	35
	Apt Elev	36

RNAV (RNP) Z RWY 13

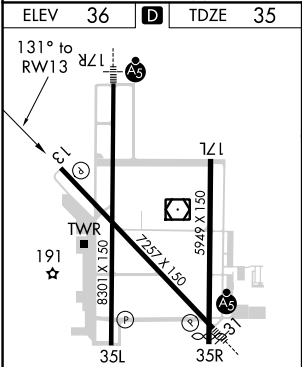
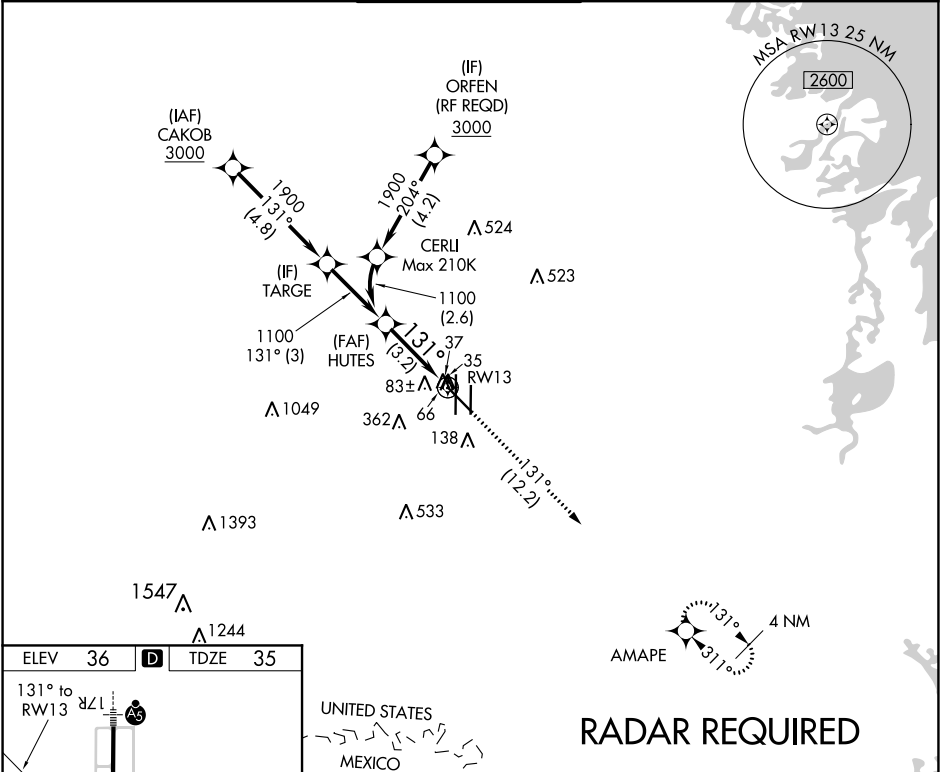
VALLEY INTL (HRL)

▼

For uncompensated Baro-VNAV systems, procedure NA below 2°C (36°F) or above 54°C (130°F). GPS required.

MISSED APPROACH: Climb to 2000 on track 131° to AMAPE and hold.

ATIS 124.85	VALLEY APP CON 120.7 279.5	HARLINGEN TOWER ★ 119.3 (CTAF) 0 317.6	GND CON 121.7	UNICOM 122.95
----------------	-------------------------------	---	------------------	------------------



HUTES

See planview for multiple IF locations.

1100

131°

RW13

GP 3.00°

TCH 59

2000

AMAPE

tr 131°

3.2 NM

CATEGORY	A	B	C	D
RNP 0.15 DA	302-7/8 267 (300-7/8)			
RNP 0.30 DA	393-1 358 (400-1)			

AUTHORIZATION REQUIRED