

APP CRS	Rwy Idg	8301
356°	TDZE	36
	Apt Elev	36

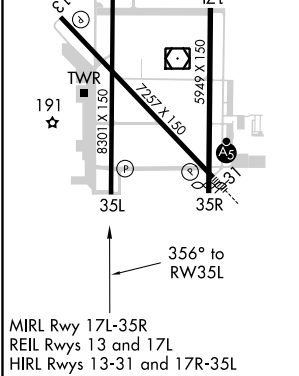
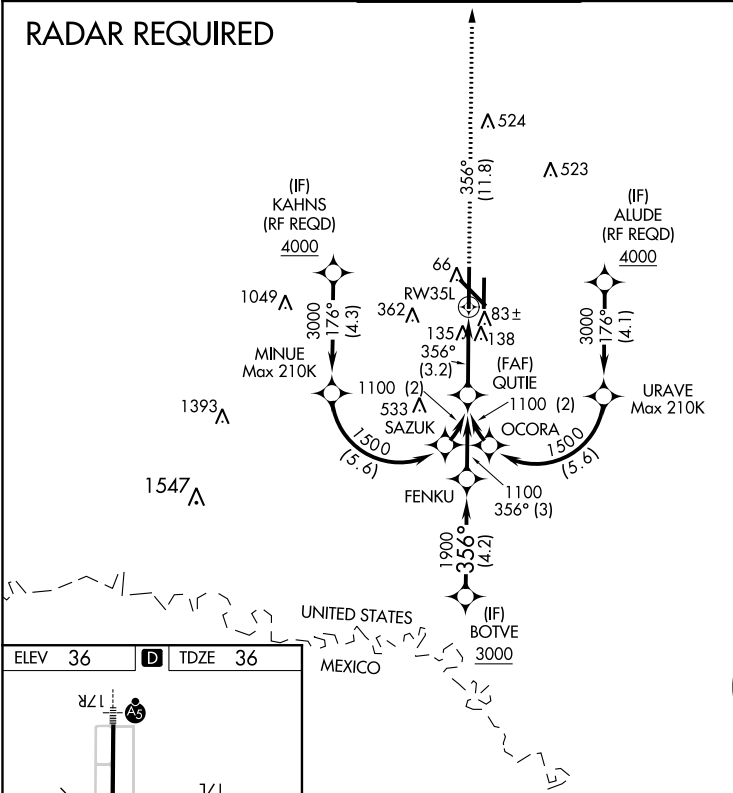
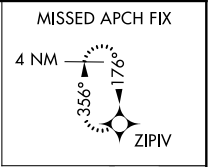
RNAV (RNP) Z RWY 35L


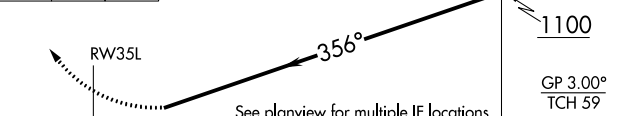
VALLEY INTL (HRL)

▼ For uncompensated Baro-VNAV systems, procedure NA below 2°C (36°F) or above 54°C (130°F). When VGSI inoperative procedure NA at night. GPS required.	MISSED APPROACH: Climb to 2000 on track 356° to ZIPIV and hold.
---	---

ATIS 124.85	VALLEY APP CON 120.7 279.5	HARLINGEN TOWER★ 119.3(CTAF) 0 317.6	GND CON 121.7	UNICOM 122.95
-----------------------	--------------------------------------	--	-------------------------	-------------------------

RADAR REQUIRED



2000 ↑	tr 356°	ZIPV 	QUTIE 1100	
				
See planview for multiple IF locations.				
3.2 NM				
CATEGORY	A	B	C	D
RNP 0.14 DA	334-1		298 (300-1)	
RNP 0.29 DA	388-1½		352 (400-1½)	
RNP 0.30 DA	479-1½		443 (500-1½)	
GP 3.00° TCH 59				