

WAAS CH 86530 W35B	APP CRS 356°	Rwy Idg TDZE 36 Apt Elev 36	8301
--	------------------------	---	-------------

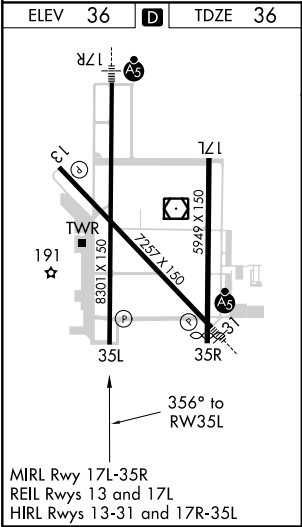
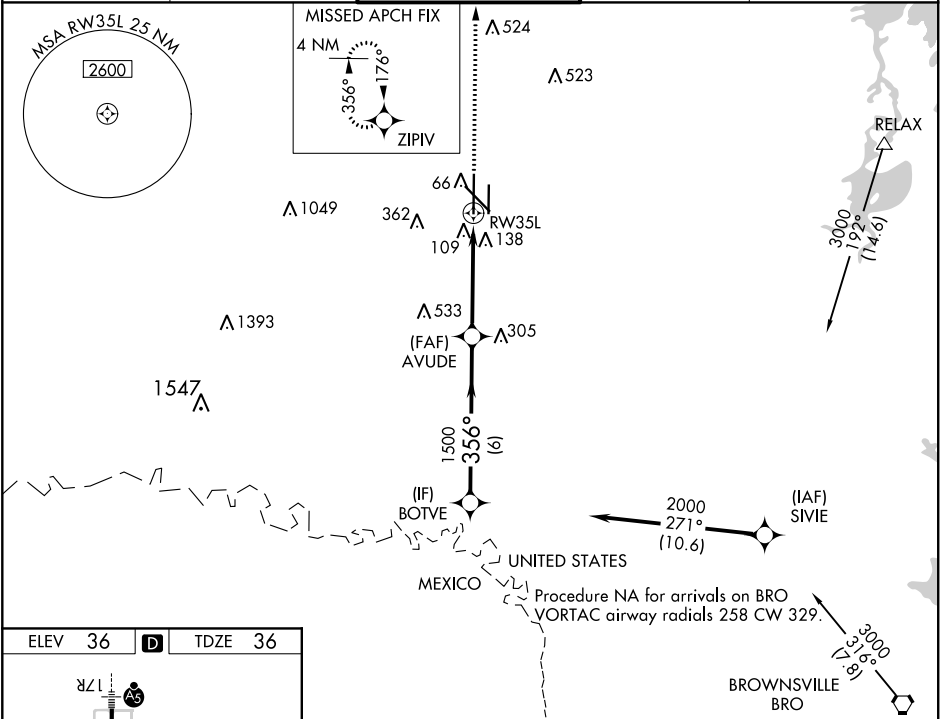
RNAV (GPS) Y RWY 35L


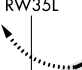

VALLEY INTL (HRL)

For uncompensated Baro-VNAV systems, LNAV/VNAV NA below -15°C (5°F) or above 54°C (130°F). DME/DME RNP-0.3 NA. When local altimeter setting not received, use Port Isabel altimeter setting: increase LPV DA to 328 feet and all visibilities ½ SM; increase LNAV/VNAV DA to 418 feet and all visibilities ½ SM; increase all MDAs 60 feet and visibility Cats C and D ¼ SM. Baro-VNAV and VDP NA with Port Isabel altimeter setting.

MISSED APPROACH:
Climb to 2000 direct ZIPV and hold.

ATIS 124.85	VALLEY APP CON 120.7 279.5	HARLINGEN TOWER ★ 119.3 (CTAF) 317.6	GND CON 121.7	UNICOM 122.95
-----------------------	--------------------------------------	---	-------------------------	-------------------------



2000 ↑	ZIPV 	* LNAV only	AVUDE 1500	BOTVE	
		* 1.3 NM to RW35L 	356° 1500	2000	GP 3.00° TCH 59
		1.3 NM	3.1 NM	6 NM	
CATEGORY	A		B	C	D
LPV DA	286-¾		250 (300-¾)		
LNAV/ VNAV DA	376-1½		340 (400-1½)		
LNAV MDA	500-1 464 (500-1)		500-1¾ 464 (500-1¾)		
 CIRCLING	500-1 464 (500-1)	560-1 524 (600-1)	680-1¾ 644 (700-1¾)	680-2 644 (700-2)	