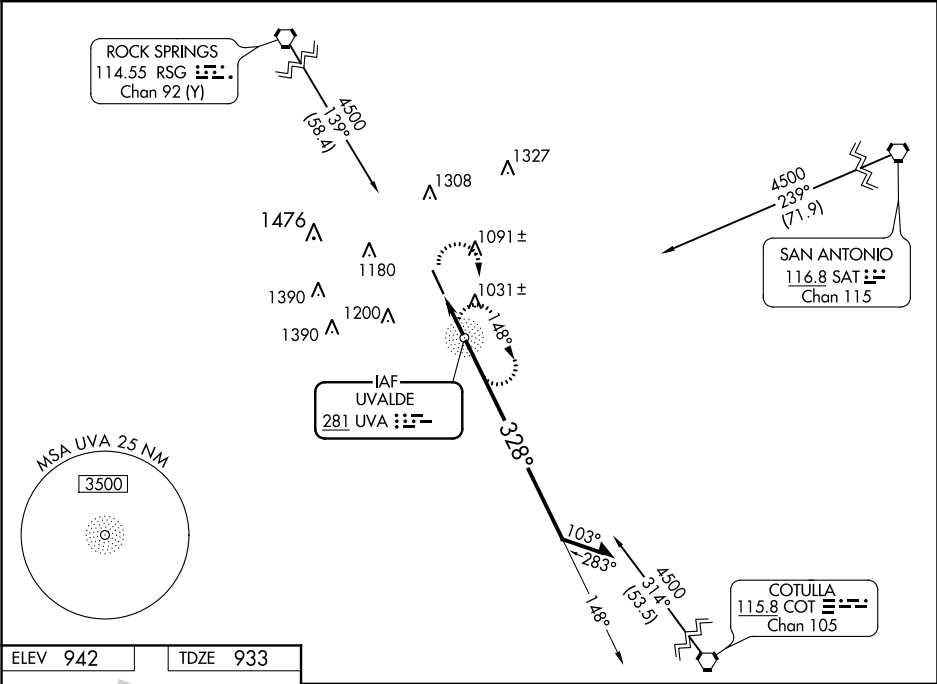


NDB UVA <b>281</b>	APP CRS <b>328°</b>	Rwy ldg <b>5256</b> TDZE <b>933</b> Apt Elev <b>942</b>
-----------------------	------------------------	---

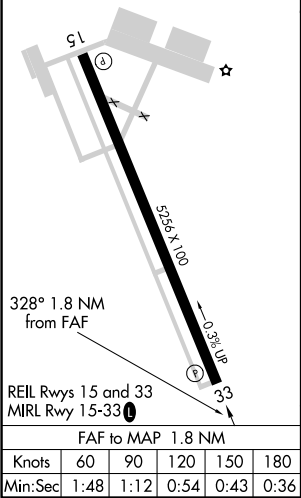
NDB RWY 33  
GARNER FIELD (UVA)

<p><b>NA</b> Obtain local altimeter setting on CTAF; when not received, use South Texas Rgnl at Hondo altimeter setting.</p>	<p>MISSED APPROACH: Climbing right turn to 2900 direct UVA NDB and hold.</p>
--	--

AWOS-3 <b>124.175</b>	HOUSTON CENTER <b>134.95 269.4</b>	UNICOM <b>122.8 (CTAF) 0</b>
--------------------------	---------------------------------------	---------------------------------



ELEV <b>942</b>	TDZE <b>933</b>
-----------------	-----------------



2900

UVA

VGSI and descent angles not coincident  
(VGSI Angle 3.00/TCH 35).

CATEGORY	A	B	C	D
S-33	1340-1	407 (400-1)	1340-1¼	407 (400-1¼)
CIRCLING	1340-1 398 (400-1)	1460-1 518 (600-1)	1460-1½ 518 (600-1½)	1500-2 558 (600-2)

SOUTH TEXAS REGIONAL AT HONDO ALTIMETER SETTING MINIMUMS

S-33	1440-1	507 (500-1)	1440-1½	507 (500-1½)
CIRCLING	1440-1 498 (500-1)	1560-1 618 (700-1)	1560-1¾ 618 (700-1¾)	1600-2 658 (700-2)

SC-3, 31 DEC 2020 to 28 JAN 2021

SC-3, 31 DEC 2020 to 28 JAN 2021