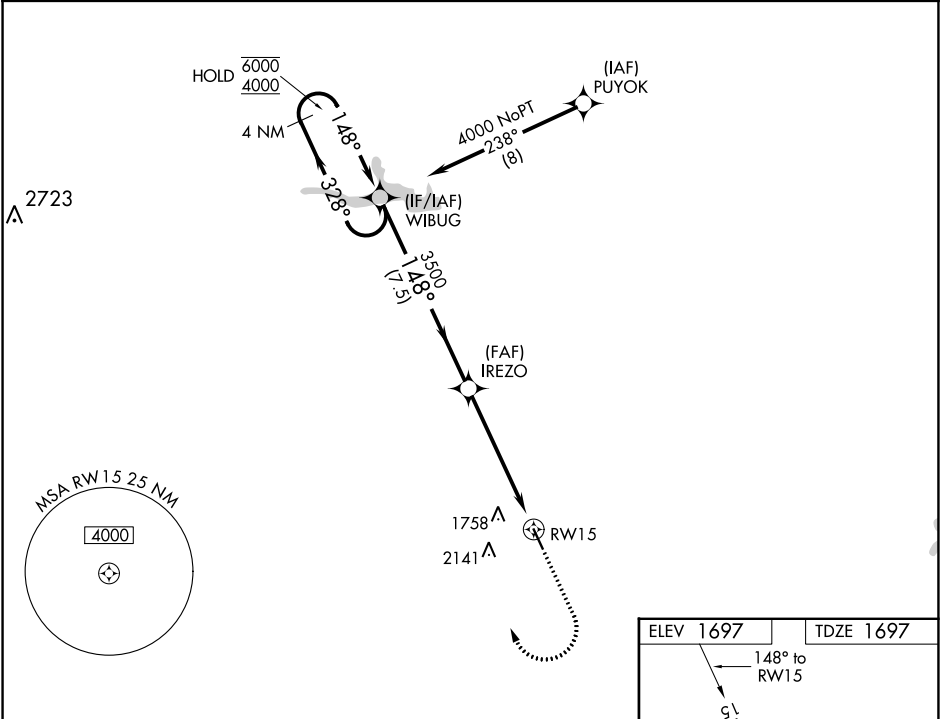


WAAS CH <b>86529</b> <b>W15A</b>	APP CRS <b>148°</b>	Rwy Idg <b>4506</b> TDZE <b>1697</b> Apt Elev <b>1697</b>
--	------------------------	---

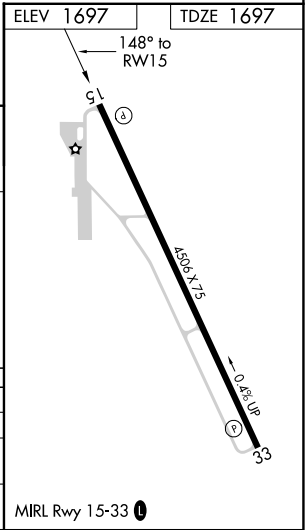
RNAV (GPS) RWY 15  
COLEMAN MUNI (COM)

RNP APCH. ▼ Rwy 15 helicopter visibility reduction below ¾ SM NA. ▲ For uncompensated Baro-VNAV systems, LNAV/VNAV NA below -18°C or above 54°C.	MISSED APPROACH: Climb to 3000 then climbing right turn to 4000 direct WIBUG and hold.
--	--

AWOS-3PT <b>119.1</b>	FORT WORTH CENTER <b>127.45 290.3</b>	UNICOM <b>122.8 (CTAF) 0</b>
--------------------------	--	---------------------------------



4 NM Holding Pattern		WIBUG		IREZO		RW15	
6000 ← 328° 4000 → 148°				3500		*1.7 NM to RW15	
GP 3.00° TCH 40				3500		*LNAV only	
		7.5 NM		3.8 NM		1.7 NM	
CATEGORY	A	B	C	D			
LPV DA	1947-¾	250 (300-¾)		NA			
LNAV/ VNAV DA	2150-1⅜	453 (500-1⅜)		NA			
LNAV MDA	2280-1	583 (600-1)	2280-1¾ 583 (600-1¾)	NA			



SC-3, 31 DEC 2020 to 28 JAN 2021

SC-3, 31 DEC 2020 to 28 JAN 2021