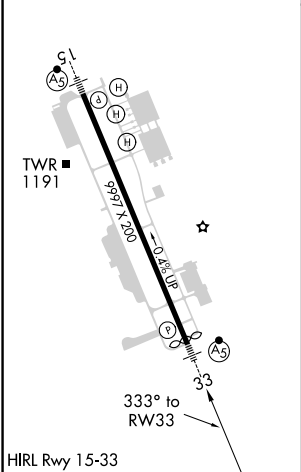
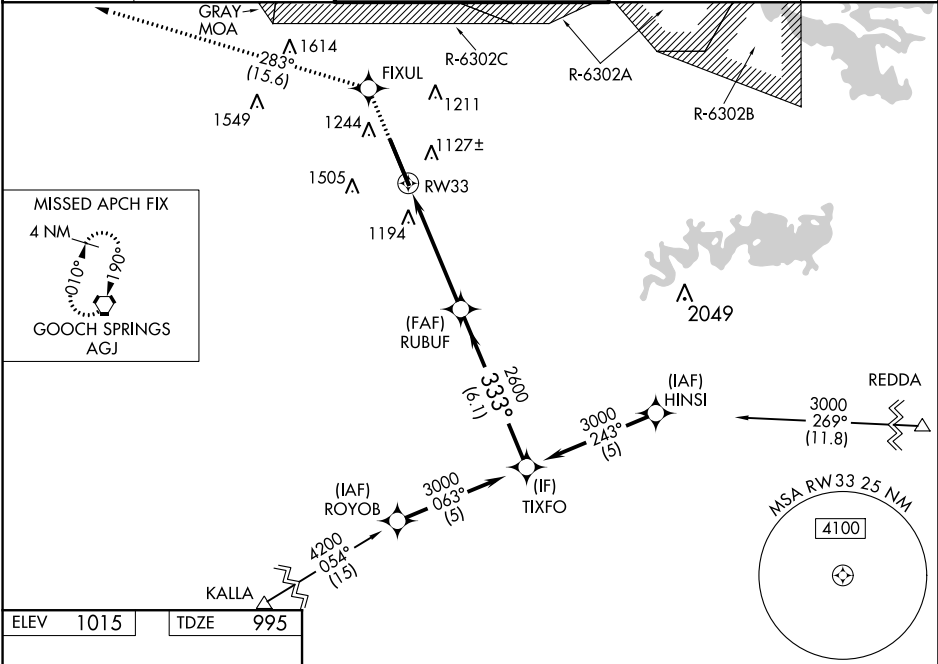


WAAS CH 82399 W33A	APP CRS 333°	Rwy Idg TDZE 995 Apt Elev 1015
--	------------------------	--

RNAV (GPS) RWY 33
ROBERT GRAY AAF (GRK)

 ASR/PAR	For uncompensated Baro-VNAV systems, LNAV/VNAV NA below -17°C (2°F) or above 54°C (130°F). Circling NA west of Rwy 15-33. DME/DME RNP-0.3 NA. For inoperative ALS, increase LPV Cat E visibility to ¾ SM, LNAV/VNAV Cat E visibility to 2 SM, and LNAV Cat E visibility to 1½ SM.	MALSR 	MISSED APPROACH: Climb to 3000 direct FIXUL and on track 283° to AGJ VORTAC and hold.
-------------	---	-----------	---

ATIS 124.9	GRAY APP CON 120.075 323.15	GRAY TOWER 120.75 285.5	GND CON 121.8 279.5	CLNC DEL 126.2 251.1
----------------------	---------------------------------------	-----------------------------------	-------------------------------	--------------------------------



3000 ↑	FIXUL ✱	tr 283° ◡	AGJ ◡	VGSI and RNAV glidepath not coincident (VGSI Angle 3.00/TCH 50).	
*LNAV only.				TIXFO 3000	
<p>RW33 *1.5 NM to RW33 RUBUF 2600 333° 2600 1.5 NM 3.4 NM 6.1 NM</p>				GP 3.00° TCH 50	
CATEGORY	A	B	C	D	E
LPV DA	1195-1/2 200 (200-1/2)				
LNAV/ VNAV DA	1552-1 1/2 557 (600-1 1/2)				
LNAV MDA	1460-1/2	465 (500-1/2)	1460-1 465 (500-1)		
CIRCLING	1540-1	525 (600-1)	1560-1 1/2 545 (600-1 1/2)	1620-2 605 (700-2)	1740-2 1/2 725 (800-2 1/2)

SC-3, 31 DEC 2020 to 28 JAN 2021

SC-3, 31 DEC 2020 to 28 JAN 2021