

TACAN NQI  
Chan 125

APCH CRS  
004°

Rwy Idg  
TDZE  
Arprt Elev

8001  
49  
50

JAL-918 [UN5]

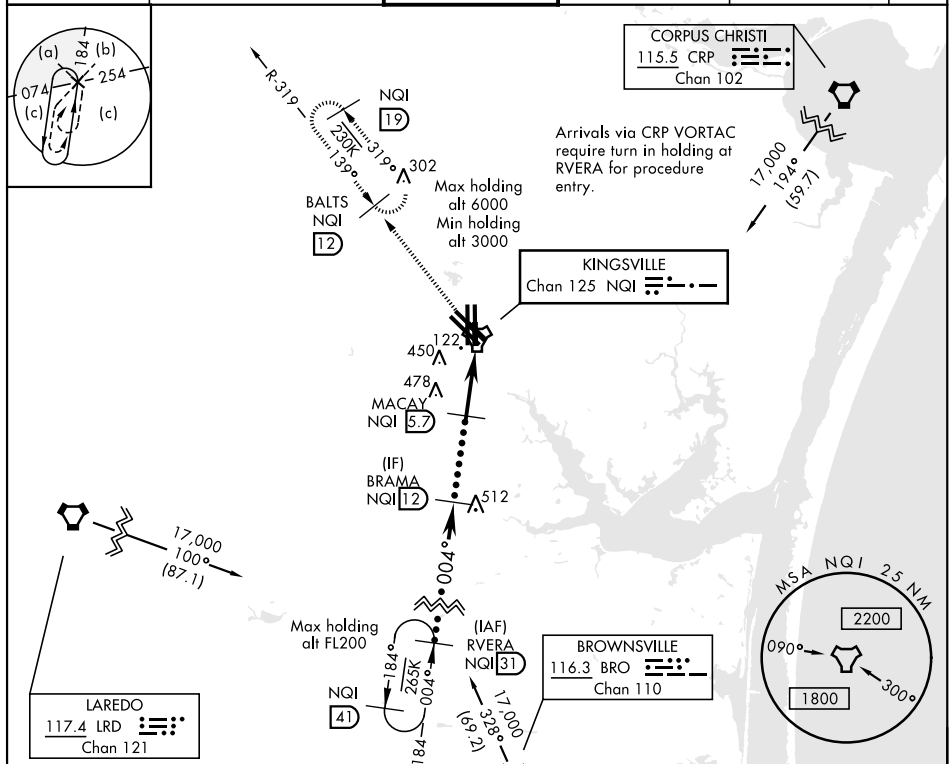
KINGSVILLE NAS (KNQI)

When ALS inop, increase CAT CDE vis to 1 mile.

ALS-F-1  
A1

MISSED APPROACH: Climb to 3000 direct NQI TACAN and climbing left turn to intercept NQI R-319 to BALTS and hold. Continue climb-in-hold to 3000.

ATIS ★ 276.2	KINGSVILLE APP CON 119.9 290.45	KINGSVILLE TOWER ★ 124.1 377.05	GND CON 239.05	CLNC DEL 328.4	ASR/ PAR
-----------------	------------------------------------	------------------------------------	-------------------	-------------------	-------------



EMERG SAFE ALT 100 NM 16,200

BRAMA 12

MACAY 5.7

TACAN

RICES 1.4

0.9

3000

1800

3.04°

TCH 50

4.8 NM

CATEGORY	C	D	E
S-35R*	420-3/4	372	(400-3/4)
CIRCLING	760-2 710 (800-2)	760-2 1/4 710 (800-2 1/4)	800-2 3/4 750 (800-2 3/4)

ELEV 50

TDZE 49

TWR

128

35L 35R

004° to TACAN