

ILS or LOC/DME RWY 13R

LOC I-NQI

110.9

APCH CRS

130°

Rwy Idg  
TDZE  
Arpt Elev

8000  
50  
50

AL-918 [USN]

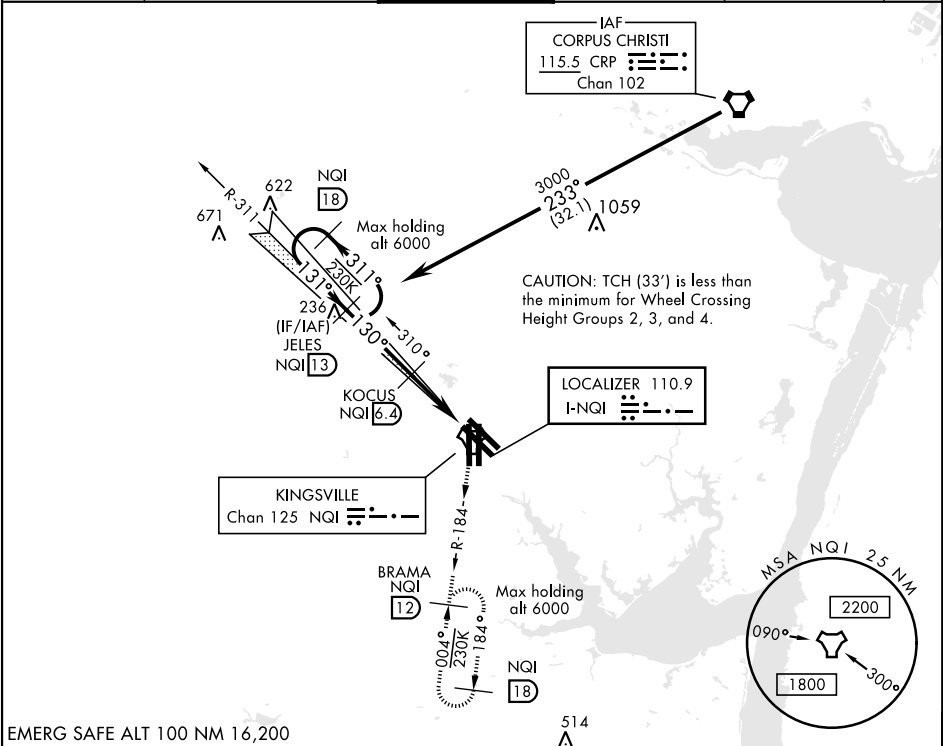
KINGSVILLE NAS

(KNQI)

TACAN required.

MISSED APPROACH: Climbing right turn to 3000 to intercept NQI TACAN R-184 to BRAMA and hold.

ATIS★ 276.2	KINGSVILLE APP CON 119.9 290.45	KINGSVILLE TOWER★ 124.1 377.05	GND CON 239.05	CLNC DEL 328.4	ASR/ PAR
----------------	------------------------------------	-----------------------------------	-------------------	-------------------	-------------



EMERG SAFE ALT 100 NM 16,200

Glideslope autocoupled NA below 439' MSL.

3000

NQI R-184

BRAMA NQI 12

JELES NQI 13

KOCUS NQI 6.4

PEXIE NQI 1.5

TACAN

GS 3.00°

TCH 33

4.9 NM

.5

CATEGORY	A	B	C	D
S-ILS 13R	250-¾		200	(200-¾)
S-LOC 13R	480-1	430 (500-1)	480-1¼	430 (500-1¼)
CIRCLING	540-1	490 (500-1)	760-2 710 (800-2)	760-2¼ 710 (800-2¼)

ELEV 50

TDZE 50

130° 5.4 NM from FAF

46°

198

TWR

35L 35R

A1

HIRL all Rwy

TDZL/CL Rwy 17L

ILS or LOC/DME RWY 13R

SC-3, 31 DEC 2020 to 28 JAN 2021

SC-3, 31 DEC 2020 to 28 JAN 2021