

TACAN RWY 35R

TACAN NQI Chan 125	APCH CRS 004°	Rwy ldg TDZE Arprt Elev	8001 49 50
-----------------------	------------------	-------------------------------	------------------

AL-918 [USN]

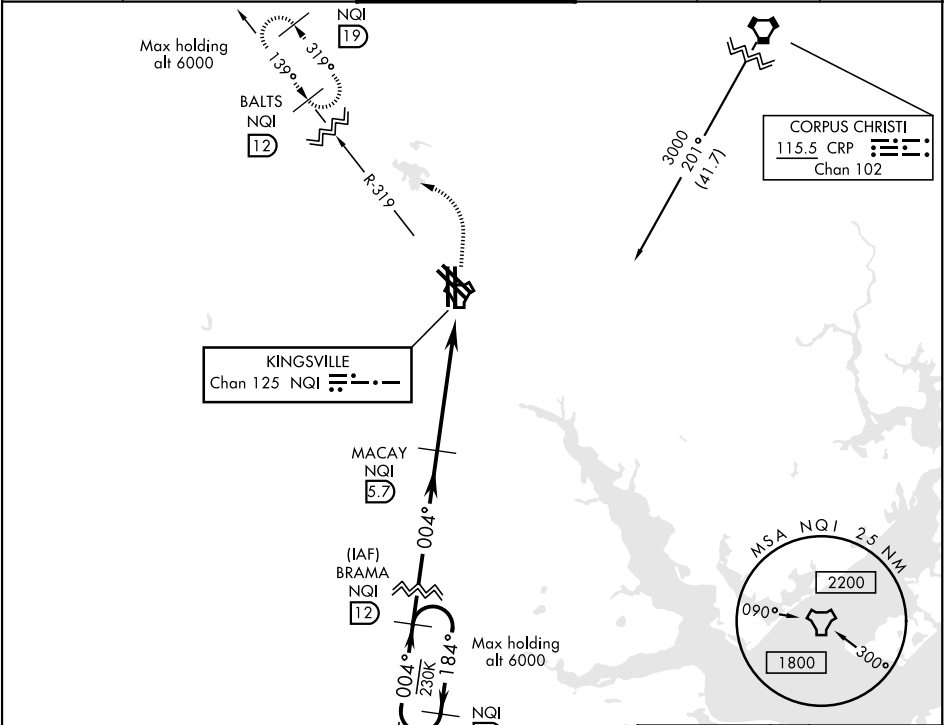
KINGSVILLE NAS (KNQI)

ALSIF-1

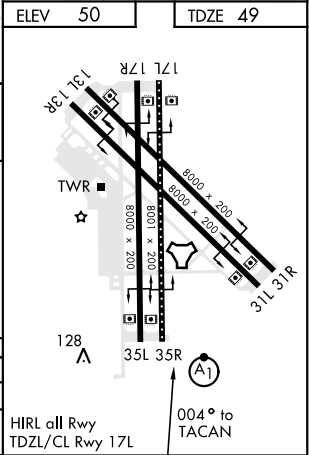
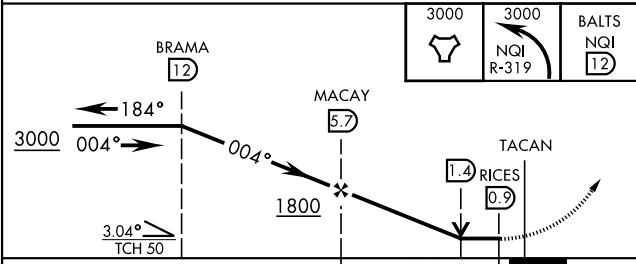
MISSED APPROACH: Climb to 3000 direct NQI TACAN and climbing left turn to intercept NQI R-319 to BALTS and hold. Continue climb-in-hold to 3000.

* When ALS inop, increase vis to 1 mile.

ATIS ★ 276.2	KINGSVILLE APP CON 119.9 290.45	KINGSVILLE TOWER ★ 124.1 377.05	GND CON 239.05	CLNC DEL 328.4	ASR/PAR
-----------------	------------------------------------	------------------------------------	-------------------	-------------------	---------



ELEV 50	TDZE 49
---------	---------



CATEGORY	A	B	C	D
S-35R *	420-1/2	372 (400-1/2)	420-3/4	372 (400-3/4)
CIRCLING	540-1	490 (500-1)	710 (800-2)	710 (800-2 1/4)

TACAN RWY 35R

SC-3, 31 DEC 2020 to 28 JAN 2021

SC-3, 31 DEC 2020 to 28 JAN 2021