

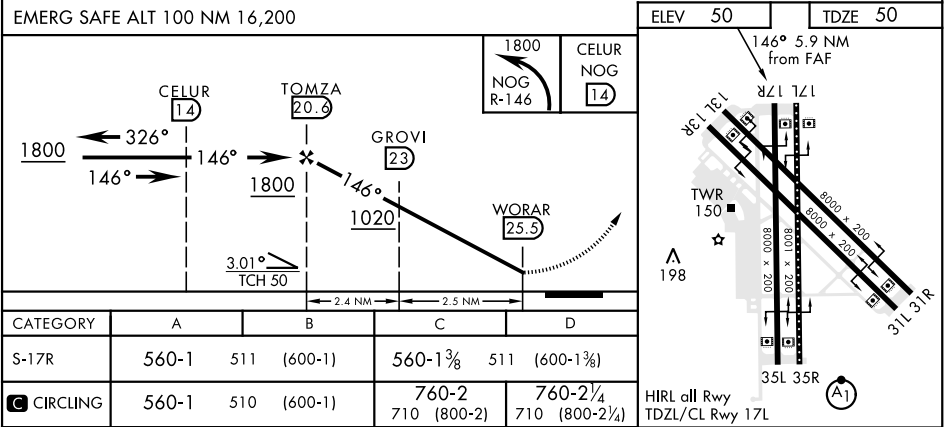
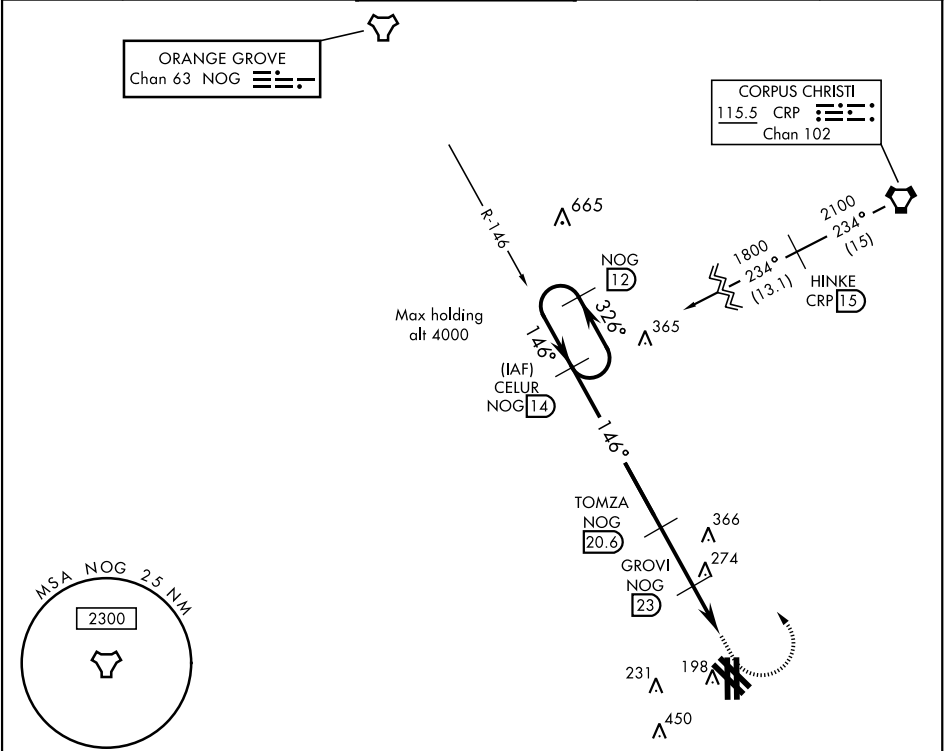
TACAN Y RWY 17R

TACAN	NOG	APCH CRS	Rwy ldg	8000
Chan	63	146°	TDZE	50
			Arpt Elev	50

AL-918 [USN]

KINGSVILLE NAS (KNQI)

V		MISSED APPROACH: Climbing left turn to 1800, intercept NOG TACAN R-146 to CELUR and hold.			
ATIS ★ 276.2	KINGSVILLE APP CON 119.9 290.45	KINGSVILLE TOWER ★ 124.1 377.05	GND CON 239.05	CLNC DEL 328.4	ASR/PAR



TACAN Y RWY 17R

SC-3, 31 DEC 2020 to 28 JAN 2021

SC-3, 31 DEC 2020 to 28 JAN 2021