

VOR/DME MFE <b>117.2</b> Chgn <b>119</b>	APP CRS <b>305°</b>	Rwy Idg <b>7120</b> TDZE <b>102</b> Apt Elev <b>107</b>
--	------------------------	---

VOR RWY 32

MC ALLEN MILLER INTL (MFE)

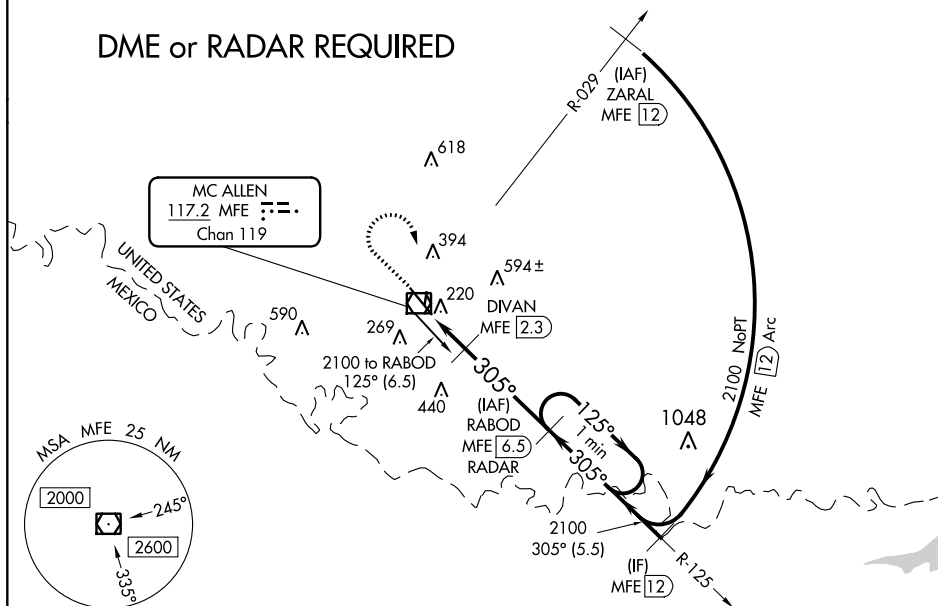


Circling NA northeast of Rwy 14-32. When local altimeter setting not received, use Weslaco altimeter setting and increase all MDA 40 feet and S-32 Cat C/D and Circling Cat C visibility  $\frac{1}{8}$  mile, increase DIVAN Fix Minimums S-32 Cat C/D visibility  $\frac{1}{8}$  mile. VDP NA when using Weslaco altimeter setting.

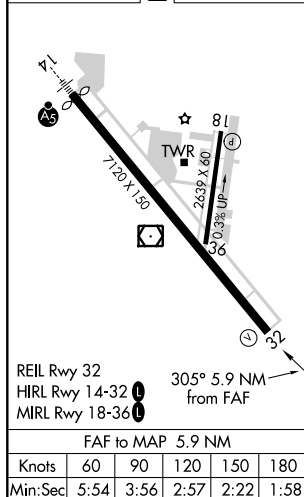
**MISSED APPROACH:** Climb to 900 then climbing right turn to 2100 direct MFE VOR/DME.

ATIS <b>128.5</b>	VALLEY APP CON <b>121.0 377.2</b>	MC ALLEN TOWER* <b>118.5 (CTAF) 0 256.9</b>	GND CON <b>121.8</b>	UNICOM <b>122.95</b>
----------------------	--------------------------------------	--	-------------------------	-------------------------

## DME or RADAR REQUIRED



ELEV 107	<b>D</b>	TDZE 102
----------	----------	----------



**RABOD MFE RADAR One Minute Holding Pattern**

The diagram illustrates a holding pattern starting at 900. Key elements include:

- MFE VOR/DME**: Initial reference point.
- MFE 0.6**, **MFE 1.6**, **DIVAN MFE 2.3**, and **RABOD MFE RADAR 6.5**: Specific distance markers along the path.
- Turns**: 125°, 305°, and 3.09° (TCH 52).
- Distances**: 1 NM, 0.7 NM, and 4.2 NM segments.
- Note**: \*700 when using Weslaco alimeter setting.

CATEGORY	A	B	C	D
S-32	660-1 558 (600-1)	660-1½ 558 (600-1½)		
<b>CIRCLING</b>	660-1 553 (600-1)	660-1½ 553 (600-1½)	800-2¼ 693 (700-2¼)	
<b>DIVAN FIX MINIMUMS</b>				
S-32	480-1 378 (400-1)			
<b>CIRCLING</b>	580-1 473 (500-1)	580-1½ 473 (500-1½)	800-2¼ 693 (700-2¼)	