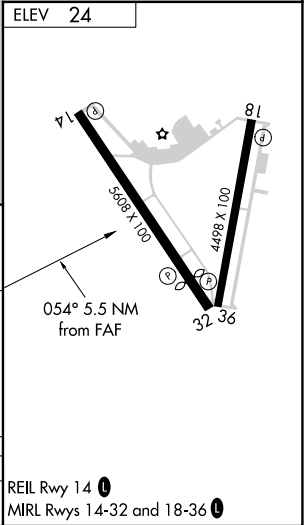
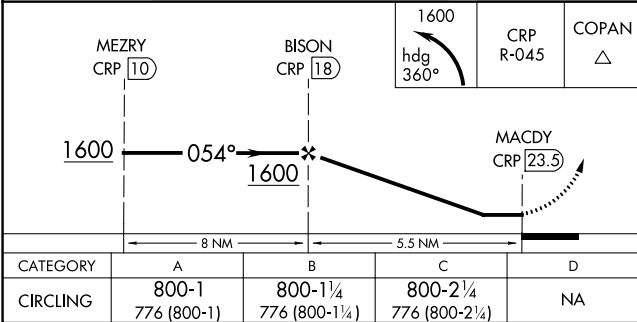
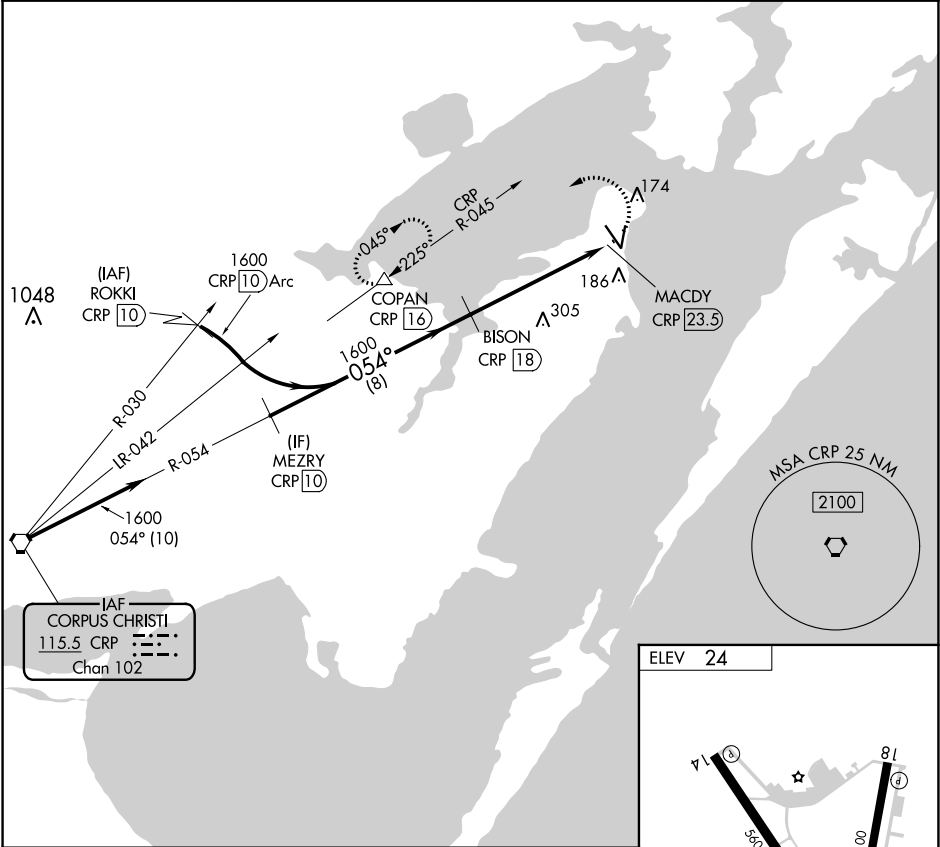


VORTAC CRP	APP CRS	Rwy Idg	N/A
<b>115.5</b>	<b>054°</b>	TDZE	N/A
Chan <b>102</b>		Apt Elev	<b>24</b>

VOR or TACAN-A  
ARANSAS COUNTY (RKP)

DME required.		MISSED APPROACH: Climbing left turn to 1600 on heading 360° and CRP VORTAC R-045 to COPAN/16 DME and hold.	
ASOS	CORPUS APP CON	CLNC DEL	UNICOM
<b>119.275</b>	<b>120.9 348.725</b>	<b>121.7</b>	<b>123.05</b> (CTAF) <b>0</b>



SC-3, 31 DEC 2020 to 28 JAN 2021

SC-3, 31 DEC 2020 to 28 JAN 2021