

FORT HOOD, TEXAS

COPTER RNAV (GPS) RWY 34

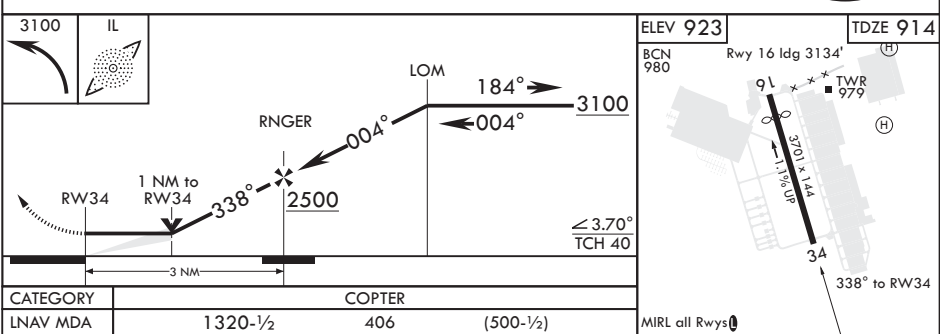
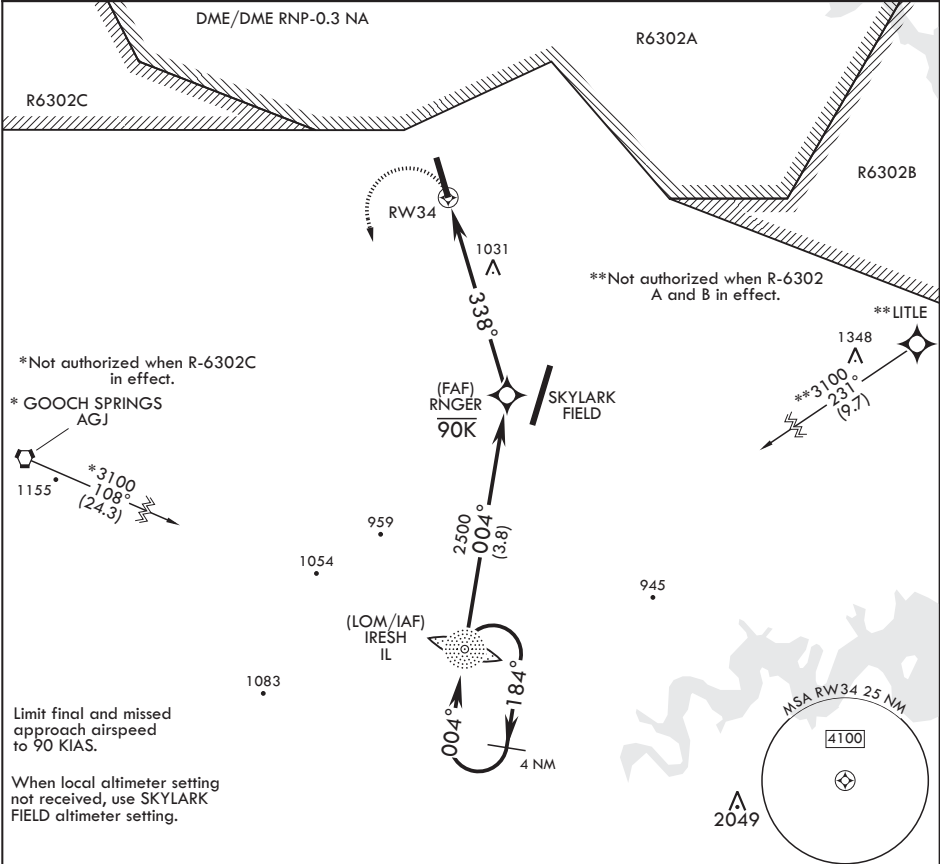
APCH CRS	Rwy Idg	3701
338°	TDZE	914
	Arpt Elev	923

AL-5031 (USA)

HOOD AHP (KHLR)

NA	MISSED APPROACH: Climbing left turn to 3100 direct IRESH LOM and hold.		
----	--	--	--

GRAY APP CON/DEP CON 120.075 323.15	TOWER* 119.65 269.45	GND CON 133.85 225.4	CLNC DEL 225.4
--	-------------------------	-------------------------	-------------------



FORT HOOD, TEXAS 31°08'N - 97°43'W HOOD AHP (KHLR)

COPTER RNAV (GPS) RWY 34

SC-3, 31 DEC 2020 to 28 JAN 2021

SC-3, 31 DEC 2020 to 28 JAN 2021