

LOC/DME I-EKI 110.3 Chan 40	APP CRS 312°	Rwy ldg 7510 TDZE 43 Apt Elev 46
---	------------------------	---

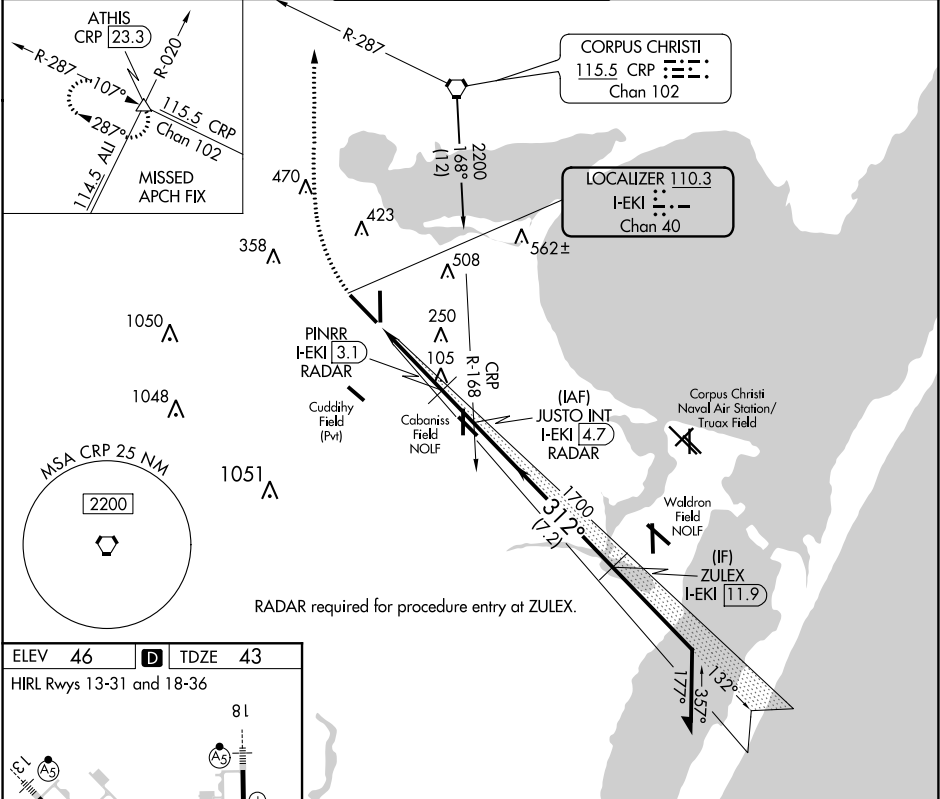
LOC RWY 31
CORPUS CHRISTI INTL (CRP)

⚠ DME or RADAR required. For inop MALSR, increase S-LOC 31 Cats C/D/E visibility to 1 mile.

MALSR

MISSED APPROACH: Climb to 700 then climbing right turn to 2000 on heading 335° and CRP VORTAC R-287 to ATHIS INT/CRP VORTAC 23.3 DME and hold.

ATIS 126.8	CORPUS APP CON 120.9 348.725	CORPUS TOWER 119.4 257.8	GND CON 121.9 269.15	CLNC DEL 118.55
----------------------	--	------------------------------------	--------------------------------	---------------------------



ELEV **46** **D** TDZE **43**

HIRL Rwy 13-31 and 18-36

Knots	60	90	120	150	180
Min:Sec	5:06	3:24	2:33	2:02	1:42

700 2000 ATHIS

hdg 335° CRP R-287

JUSTO INT I-EKI 4.7 RADAR

Remain within 15 NM

2200 132° 2000

312° 1700

VGSI and descent angles not coincident (VGSI Angle 3.00° TCH 50).

1300

1 2.5 NM 1.6 NM

CATEGORY	A	B	C	D	E
S-LOC 31	400-1/2 357 (400-1/2)	400-1/2 357 (400-1/2)	400-1/2 357 (400-1/2)	400-1/2 357 (400-1/2)	400-1/2 357 (400-1/2)
CIRCLING	500-1 454 (500-1)	580-1 534 (600-1)	820-2 774 (800-2 1/2)	820-2 774 (800-2 1/2)	820-2 774 (800-2 3/4)

SC-3, 31 DEC 2020 to 28 JAN 2021

SC-3, 31 DEC 2020 to 28 JAN 2021