

VORTAC CRP	Rwy Idg	6080
115.5	APP CRS	192°
Chan 102	TDZE	42
	Apt Elev	46

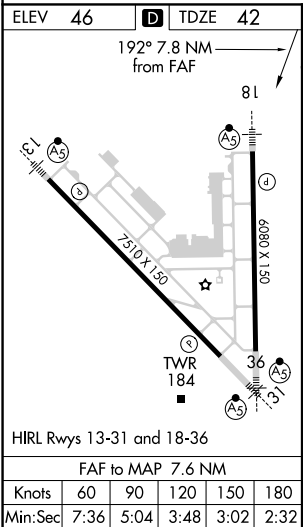
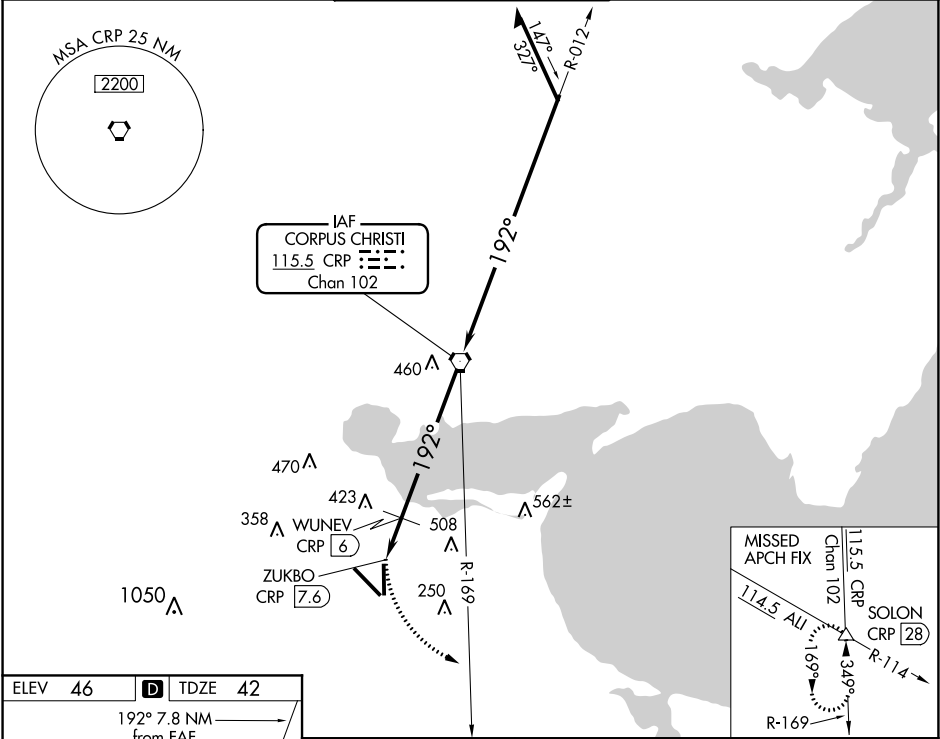
VOR or TACAN RWY 18  
CORPUS CHRISTI INTL (CRP)

**▼** Rwy 18 helicopter visibility reduction below ¾ SM NA.  
**▲** Inop table does not apply.

**MALSR**  
AS

**MISSED APPROACH:** Climbing left turn to 2000 on heading 165° and on CRP VORTAC R-169 to SOLON INT/CRP 28 DME and hold.

ATIS 126.8	CORPUS APP CON 120.9 348.725	CORPUS TOWER 119.4 257.8	GND CON 121.9 269.15	CLNC DEL 118.55
---------------	---------------------------------	-----------------------------	-------------------------	--------------------



2000	CRP R-169	SOLON △			
hdg 165°					
	ZUKBO CRP 7.6	WUNEV CRP 6			
	≤3.15° TCH 52				
		700			
	0.2	1.6 NM	6 NM		
CATEGORY	A	B	C	D	E
S-18	700-1	658 (700-1)	700-1 <sup>7</sup> / <sub>8</sub>	658 (700-1 <sup>7</sup> / <sub>8</sub> )	
<b>C</b> CIRCLING	700-1	654 (700-1)	820-2 <sup>1</sup> / <sub>4</sub> 774 (800-2 <sup>1</sup> / <sub>4</sub> )	820-2 <sup>1</sup> / <sub>2</sub> 774 (800-2 <sup>1</sup> / <sub>2</sub> )	820-2 <sup>3</sup> / <sub>4</sub> 774 (800-2 <sup>3</sup> / <sub>4</sub> )
WUNEV DME MINIMUMS					
S-18	600-1	558 (600-1)	600-1 <sup>5</sup> / <sub>8</sub>	558 (600-1 <sup>5</sup> / <sub>8</sub> )	
<b>C</b> CIRCLING	600-1	554 (600-1)	820-2 <sup>1</sup> / <sub>4</sub> 774 (800-2 <sup>1</sup> / <sub>4</sub> )	820-2 <sup>1</sup> / <sub>2</sub> 774 (800-2 <sup>1</sup> / <sub>2</sub> )	820-2 <sup>3</sup> / <sub>4</sub> 774 (800-2 <sup>3</sup> / <sub>4</sub> )

CRP  
VORTAC

012°

192°

2100

1700

Remain within 15 NM

SC-3, 31 DEC 2020 to 28 JAN 2021

SC-3, 31 DEC 2020 to 28 JAN 2021