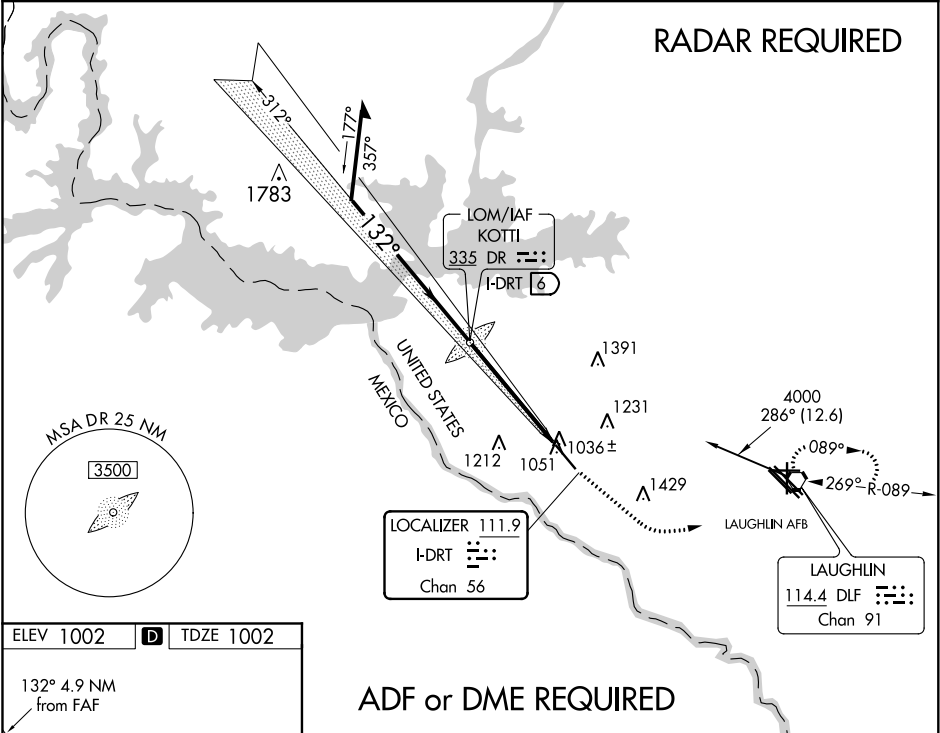


LOC I-DRT 111.9 Chan 56	APP CRS 132°	Rwy Idg 6000 TDZE 1002 Apt Elev 1002
---	------------------------	---

ILS or LOC RWY 13
DEL RIO INTL (DRT)

<p>▼ Circling NA for Cat D SW of Rwy 13-31. When local altimeter setting not received, use Laughlin AFB altimeter setting and increase all DAs 30 feet, all MDAs 40 feet, increase S-LOC 13 Cat D and Circling Cat D visibility ¼ mile. VDP NA when using Laughlin AFB altimeter setting.</p>	<p>MALS</p> <p>⦿ $\frac{1}{2}$ $\frac{1}{4}$</p>	<p>MISSED APPROACH: Climb to 2000 via heading 122° then climbing left turn to 4000 direct DLF VORTAC and hold. Continue climb-in-hold to 4000.</p>
---	--	--

ASOS 118.525	DEL RIO APP CON ★ 119.6 259.1	CLNC DEL 120.5	UNICOM 122.8 (CTAF) 0
------------------------	---	--------------------------	---------------------------------



ELEV 1002	D	TDZE 1002
132° 4.9 NM from FAF		
REIL Rwy 31		
HIRL Rwy 13-31		
FAF to MAP 4.9 NM		
Knots	60	90 120 150 180
Min:Sec	4:54	3:16 2:27 1:58 1:38

Remain within 10 NM	DR KOTTI LOM I-DRT 6	2000	4000	DLF
3200	2673	hdg 122°		
312°				
132°				
2700				
GS 3.00° TCH 48				
3.7 NM				
1.2				
I-DRT 2.3				
I-DRT 1.2				
CATEGORY	A	B	C	D
S-ILS 13		1202-3/4	200 (200-3/4)	
S-LOC 13	1420-1/2	418 (500-1/2)	1420-3/4	418 (500-3/4)
CIRCLING	1440-1 438 (500-1)	1460-1 458 (500-1)	1560-1 558 (600-1 1/2)	1640-2 638 (700-2)