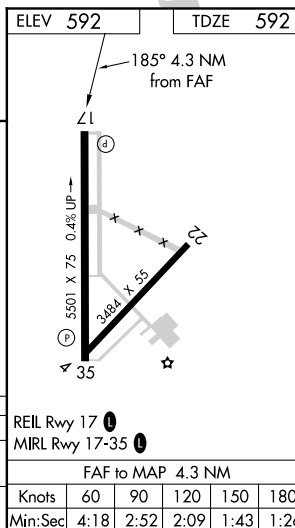
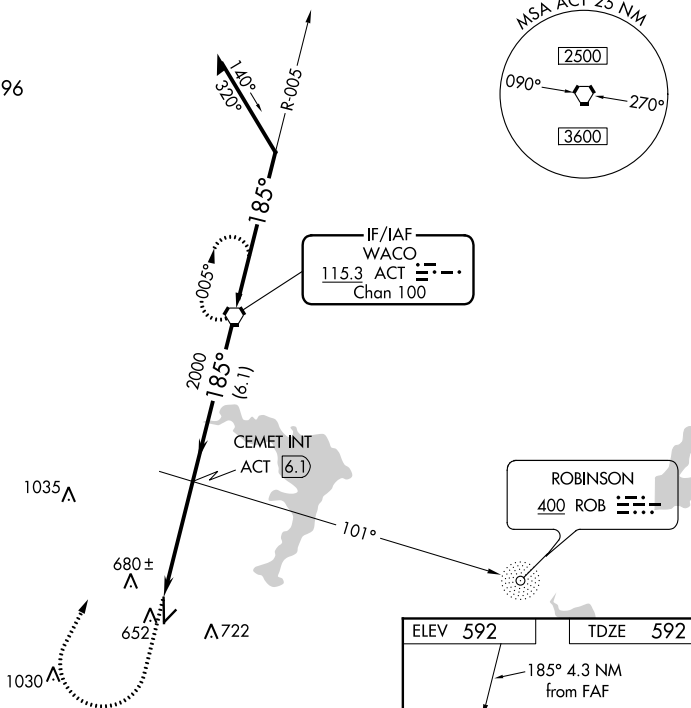


VOR RWY 17  
MC GREGOR EXECUTIVE (PWG)

**MISSED APPROACH:** Climb to 1000 then climbing right turn to 4000 direct ACT VORTAC and hold, continue climb-in-hold to 4000.

UNICOM  
122.8 (CTAF) **L**

MC GREGOR EXECUTIVE (PWG)  
VOR RWY 17