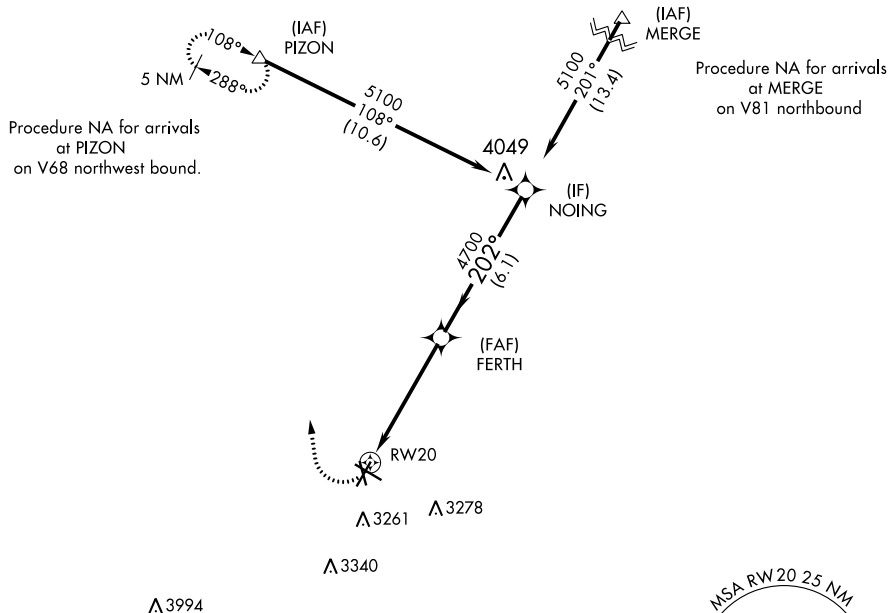


AL-5689 (FAA)RNAV (GPS) RWY 20
ODESSA-SCHLEMEYER FIELD (ODO)

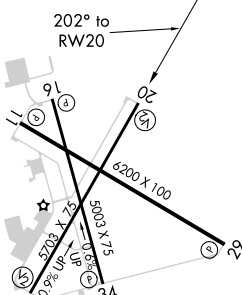
T Circling NA south of Rwy 2 and 34. When local altimeter setting not received use
A Midland Intl Air and Space Port altimeter setting and increase all MDAs 60 feet.
Rwy 20 helicopter visibility reduction below 1 SM NA.

MISSED APPROACH:
Climbing right turn to
5100 direct PIZON
and hold.

ASOS 119.275	MIDLAND APP CON ★ 124.6 256.875	CLNC DEL 121.7	UNICOM 123.0 (CTAF) 0
------------------------	---	--------------------------	--



ELEV	3004		TDZE	3004
------	------	--	------	------

MIRL Rwy 2-20, 11-29, and 16-34 **L**