

WAAS  
CH **77527**  
**W30A**

APP CRS  
**305°**

Rwy Idg **5300**  
TDZE **1589**  
Apt Elev **1617**

**RNAV (GPS) RWY 30**

KERRVILLE MUNI/LOUIS SCHREINER FIELD (E.R.V)

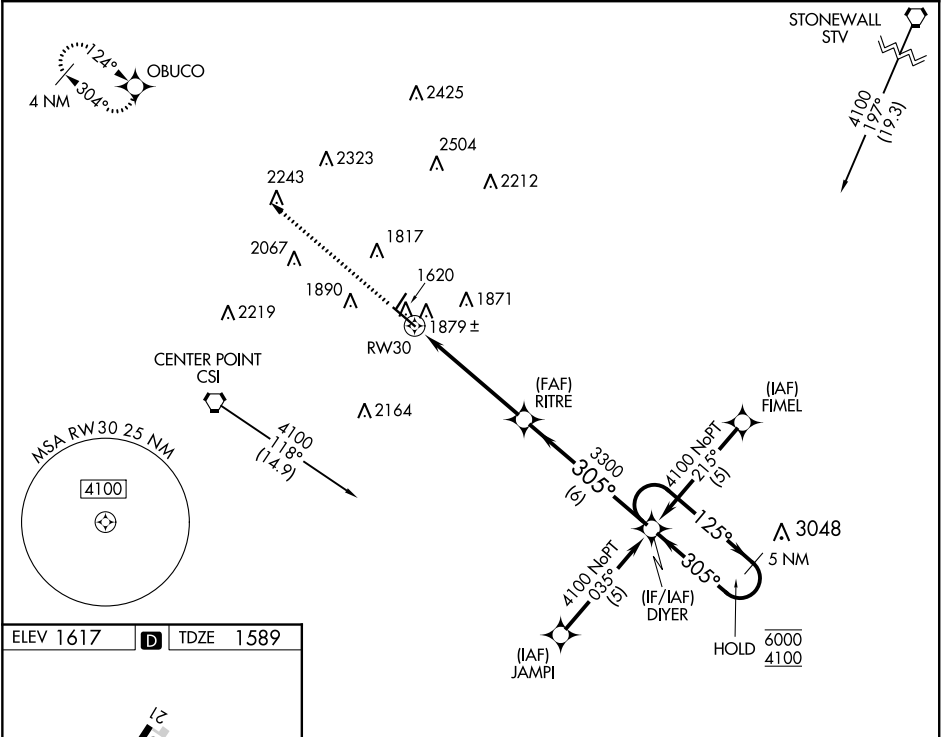
RNP APCH.

▽

▲

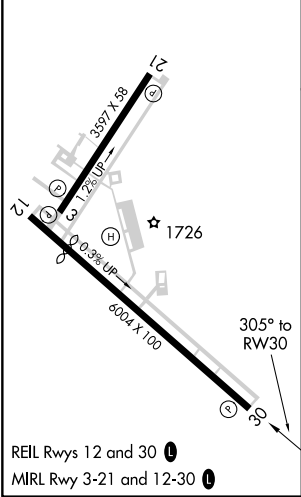
MISSED APPROACH: Climb to 4000  
direct OBUCO and hold.

AWOS-3 <b>118.125</b>	HOUSTON CENTER <b>134.95 269.4</b>	CLNC DEL <b>134.95</b>	UNICOM <b>122.7 (CTAF)</b>
--------------------------	---------------------------------------	---------------------------	-------------------------------



ELEV 1617

TDZE 1589



4000	OBUCO	VGSI and RNAV glidepath not coincident (VGSI Angle 3.00°/TCH 40°).				5 NM Holding Pattern
*RNAV only.		*1.7 NM to RW30		DIYER		125° → 6000 ← 305° 4100
RW30		RITRE 3300		3300		GP 3.00° TCH 45
1.7 NM		3.5 NM		6 NM		
CATEGORY	A	B	C	D		
LPV DA	1860-1		271 (300-1)		NA	
RNAV MDA	2140-1		551 (600-1)		2140-1½ 551 (600-1½)	
CIRCLING	2320-1 703 (800-1)		2340-1 723 (800-1)		2380-2¼ 763 (800-2¼)	
						NA