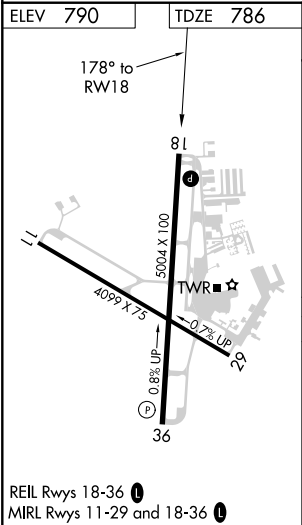
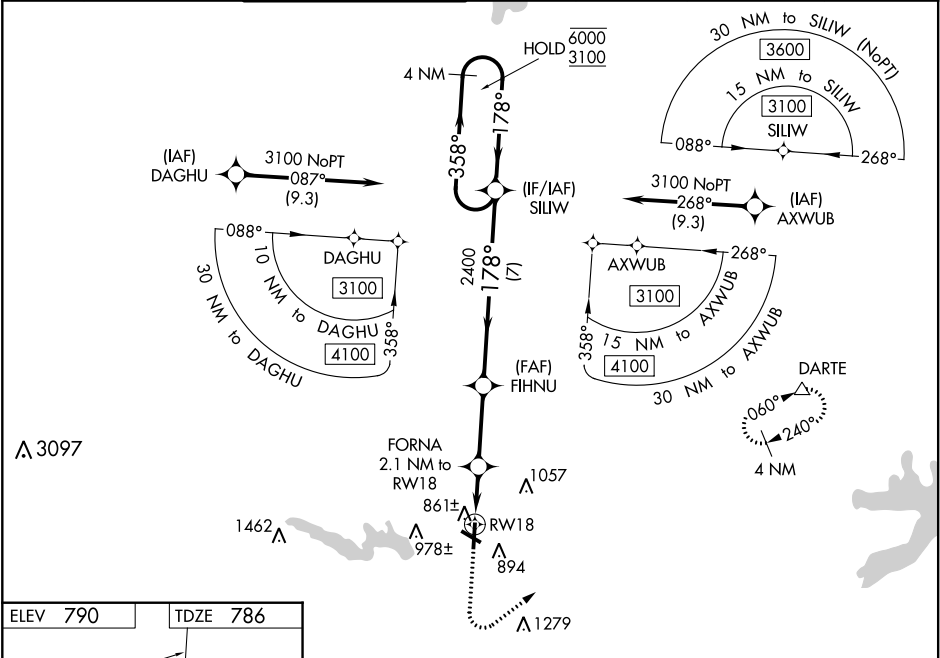





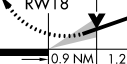
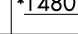
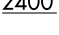
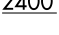

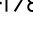

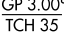

WAAS CH 62938 W18A	APP CRS 178°	Rwy Idg TDZE 786 Apt Elev 790	5004
--	------------------------	---	-------------

RNAV (GPS) RWY 18
GEORGETOWN MUNI (GTU)

RNP APCH.	MISSED APPROACH: Climb to 1300 then climbing left turn to 3000 direct DARTE and hold.
▼ Circling Rwy 29 NA at night. For uncompensated Baro-VNAV systems, LNAV/VNAV NA below -16°C or above 54°C.	

ATIS 118.6	AUSTIN APP CON 119.0 370.85	GEORGETOWN TOWER ★ 120.225 (CTAF) 0	GND CON 119.125	CLNC DEL 119.125	CLNC DEL 121.1 (when twr closed)	UNICOM 123.0
----------------------	---------------------------------------	---	---------------------------	----------------------------	---	------------------------



1300	3000	DARTE				
						
* LNAV only:			FORNA 2.1 NM to RW18			
			* 0.9 NM to RW18			
			*1480			
			2400			
			2400			
			178°			
			358° → 6000 ← 178° 3100			
			SILW 4 NM Holding Pattern			
			GP 3.00° TCH 35			
CATEGORY			A	B	C	D
LPV	DA	1036-1		250 (300-1)		
LNAV/ VNAV	DA	1036-1		250 (300-1)		
LNAV	MDA	1120-1		334 (400-1)		
 CIRCLING	1240-1 450 (500-1)	1340-1 550 (600-1)	1360-1½ 570 (600-1½)	1640-2¾ 850 (900-2¾)		

SC-3, 31 DEC 2020 to 28 JAN 2021

SC-3, 31 DEC 2020 to 28 JAN 2021