

APP CRS 189°	Rwy Idg TDZE Apt Elev	5001 1284 1284
------------------------	-----------------------------	---

RNAV (GPS) RWY 19

BURNET MUNI KATE CRADDOCK FIELD (BMQ)

RNP APCH.

- T** When local altimeter setting not received, use Lago Vista altimeter setting and increase all MDA 60 feet and increase LNAV Cts A/B/C visibilities $\frac{1}{4}$ SM. Procedure NA at night. Rwy 19 helicopter visibility reduction below 1 SM NA.

MISSED APPROACH: Climb to 3100
direct FINTI then via track 180° to
AMUSE.

ASOS 119,925	HOUSTON CENTER 132.35 317.5	UNICOM 122.8 (CTAF) 0
------------------------	---------------------------------------	---------------------------------

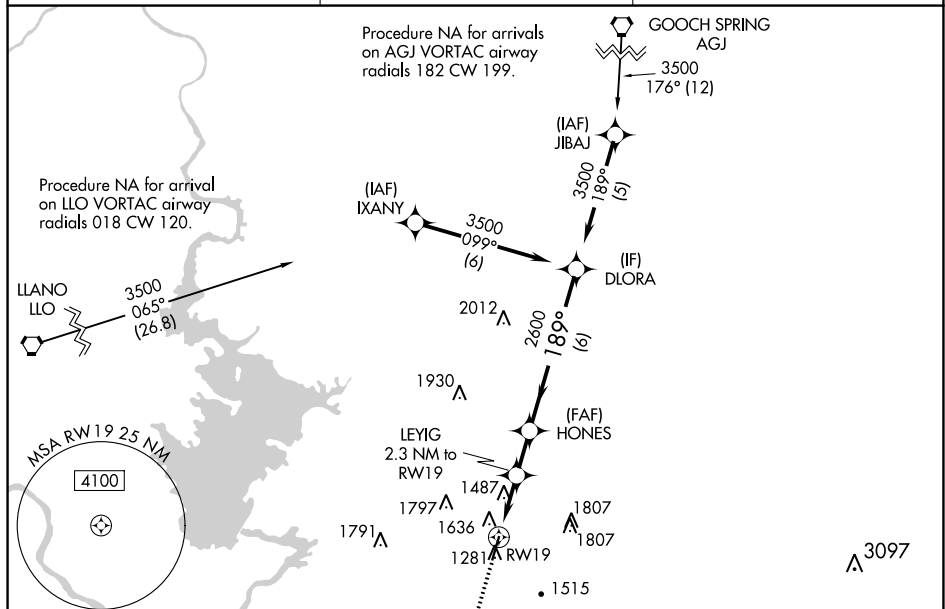


Diagram illustrating the layout of REIL RWY 1-19. The runway is 5001' x 75' and has a 0.5% up slope. The diagram shows a 180° turn to RWY 19. The TDZE (Touchdown Zone Elevation) is 1284. The diagram includes a runway layout with a star symbol and a 180° turn to RWY 19.

3100	FINTI	tr 180°	AMUSE				
CATEGORY	A		B		C	D	
LNAV MDA	1940-1 656 (700-1)		1940-1 $\frac{3}{4}$ 656 (700-1 $\frac{3}{4}$)		NA		