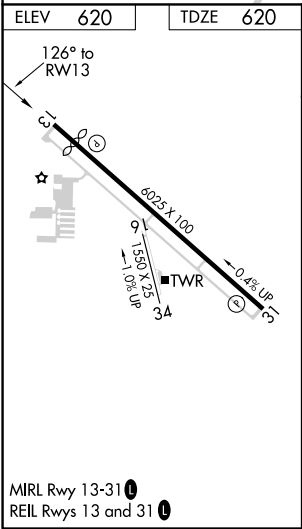
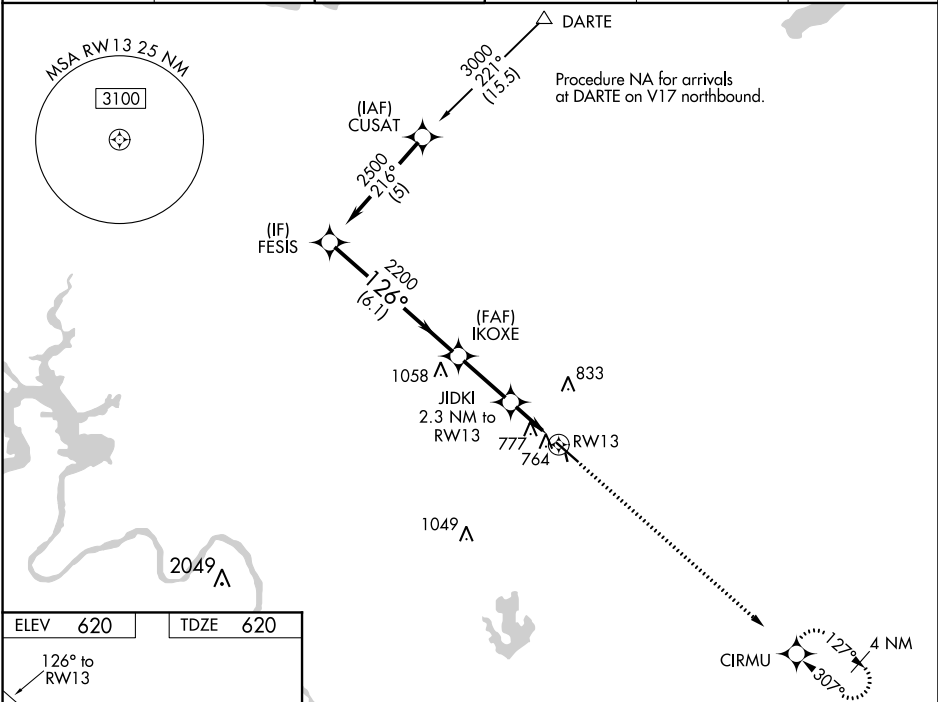


WAAS CH 63116 W13A	APP CRS 126°	Rwy Idg TDZE Apt Elev	5425 620 620
--	------------------------	-----------------------------	---

RNAV (GPS) RWY 13
AUSTIN EXECUTIVE (EDC)

RNP APCH.	Baro-VNAV NA when using Austin-Bergstrom Intl altimeter setting. For uncompensated Baro-VNAV systems, LNAV/VNAV NA below -16°C (4°F) or above 47°C (116°F). Visibility reduction by helicopters NA. When local altimeter setting not received, use Austin-Bergstrom Intl altimeter setting: increase LPV DA to 912 feet, increase LNAV/VNAV DA to 1168 feet; increase all MDA 60 feet. VDP NA with Austin-Bergstrom Intl altimeter setting. Circling NA to Rwy 16 and 34.	MISSED APPROACH: Climb to 2100 direct CIRMU and hold.
-----------	---	--

AWOS-3 118.825	APP CON 127.225 317.65	EXECUTIVE TOWER★ 120.3 (CTAF) 0	GND CON 119.45	CLNC DEL 126.025 (when tower closed)	UNICOM 122.975
--------------------------	----------------------------------	---	--------------------------	---	--------------------------



<div><div>FESIS</div><div>IKOXE</div><div>JIDKI</div><div>2.3 NM to RW13</div><div>*1.3 NM to RW13</div><div>RW13</div></div> <div><div>2500</div><div>2200</div><div>*1380</div></div> <div><div>126°</div><div>2200</div><div>6.1 NM</div><div>2.5 NM</div><div>1 NM</div><div>1.3 NM</div></div> <div><div>2100</div><div>CIRMU</div><div>*LNAV only.</div></div>				
Procedure Turn NA				
GP 3.00°				
TCH 40				
CATEGORY	A	B	C	D
LPV DA	870-1 250 (300-1)			
LNAV/VNAV DA	1126-1¾ 506 (600-1¾)			
LNAV MDA	1080-1	460 (500-1)	1080-1½ 460 (500-1½)	1080-1½ 460 (500-1½)
CIRCLING	1140-1 520 (600-1)	1160-1 540 (600-1)	1160-1½ 540 (600-1½)	1220-2 600 (600-2)

SC-3, 31 DEC 2020 to 28 JAN 2021

SC-3, 31 DEC 2020 to 28 JAN 2021