

VORTAC THX 111.4 Chan 51	APP CRS 106°	Rwy Idg TDZE Apt Elev	4553 268 273
--------------------------------	-----------------	-----------------------------	--------------------

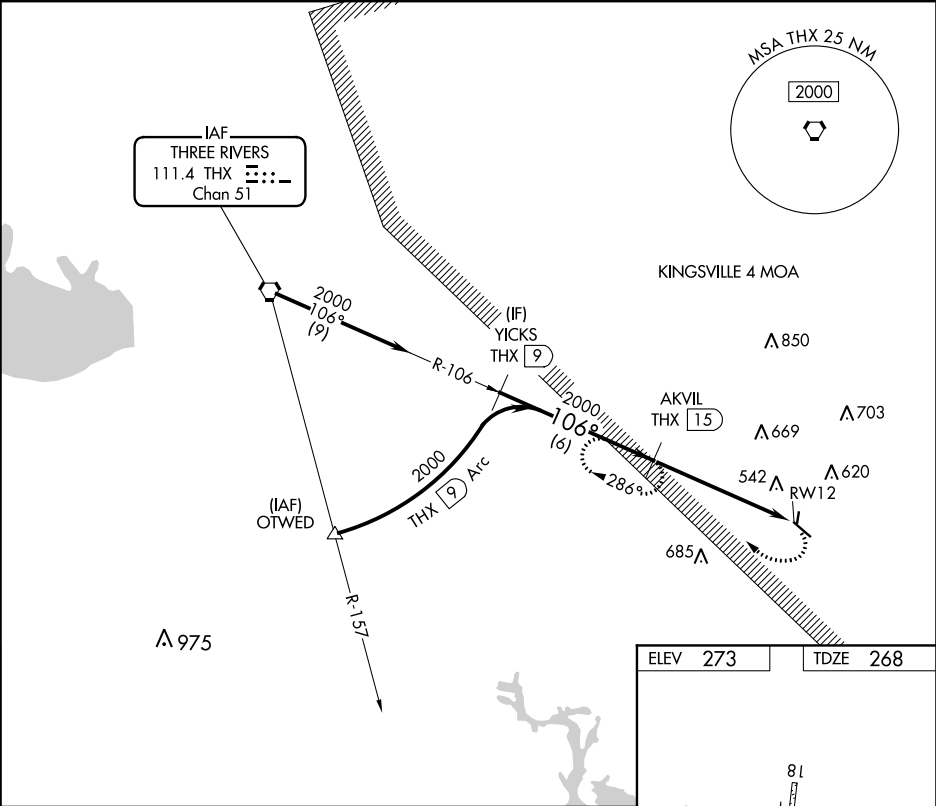
VOR/DME RWY 12
BEEVILLE MUNI (BEA)

NA

Use Corpus Christi Intl altimeter setting.
Circling NA to Rwy 18 and 36.

MISSED APPROACH: Climbing right turn to 2000 via THX VORTAC R-106 to AKVIL/THX VORTAC 15 DME and hold. Continue climb-in-hold to 2000.

AWOS-3 118.675	HOUSTON CENTER 134.6 322.5	UNICOM 122.8 (CTAF) 0
-------------------	-------------------------------	---------------------------------



Procedure Turn NA

YICKS THX 9

AKVIL THX 15

2000

106°

2000

VGSI and descent angles not coincident (VGSI Angle 3.00/TCH 20).

2.90° TCH 40

6 NM

5.5 NM

CATEGORY	A	B	C	D
S-12	1000-1 732 (800-1)	1000-1¼ 732 (800-1¼)	1000-2 732 (800-2)	NA
CIRCLING	1000-1 727 (800-1)	1020-1¼ 747 (800-1¼)	1120-2½ 847 (900-2½)	NA

ELEV 273 TDZE 268

2000 THX R-106

AKVIL THX 15

RW12 THX 20.5

81

0.3% UP

2251 X 40

4553 X 75

0.5% UP

MIRL Rwy 12-30 **0**

SC-3, 31 DEC 2020 to 28 JAN 2021

SC-3, 31 DEC 2020 to 28 JAN 2021