

WAAS CH <b>82435</b> <b>W13A</b>	APP CRS <b>128°</b>	Rwy Idg TDZE Apt Elev	<b>6503</b> <b>658</b> <b>658</b>
--	------------------------	-----------------------------	---

RNAV (GPS) RWY 13

NEW BRAUNFELS RGNL (BAZ)

RNP APCH

▼

▲

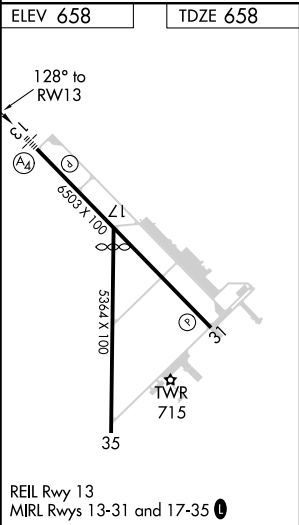
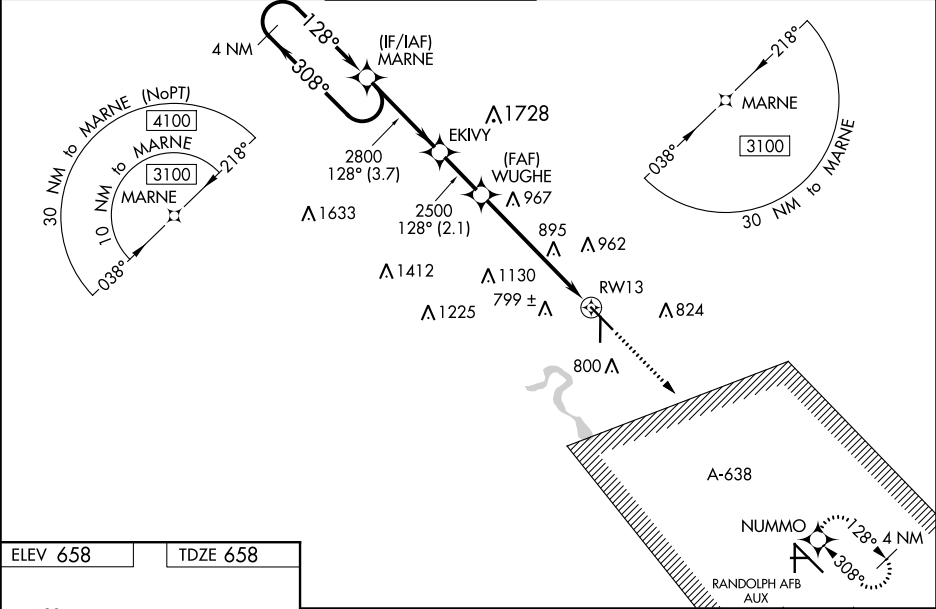
When local altimeter setting not received, use San Marcos Rgnl altimeter setting; increase LPV DA to 951 feet, LNAV/VNAV DA to 1169 feet; increase all MDAs 60 feet and visibility LNAV and Circling Cat C/D ¼ SM. For uncompensated Baro-VNAV systems, LNAV/VNAV NA below -6°C (22°F) or above 54°C (130°F). Baro-VNAV and VDP NA when using San Marcos altimeter setting. For inop ALS, increase LNAV/VNAV visibility to 1 ½ SM. Inop table does not apply to LPV all Cats and LNAV Cats A/B. For inop ALS when using San Marcos Rgnl altimeter setting, increase LPV all Cats visibility to ¾ SM and LNAV/VNAV all Cats visibility to 1 ¾ SM. When using San Marcos Rgnl altimeter setting, inop table does not apply to LNAV Cats A/B.

MALS

A4

MISSED APPROACH:  
Climb to 3500 direct NUMMO and hold, continue climb-in-hold to 3500.

ATIS <b>119.325</b>	SAN ANTONIO APP CON <b>124.45 335.625</b>	NEW BRAUNFELS TOWER ★ <b>127.05 285.4</b>	GND CON <b>120.175</b>	CLNC DEL <b>134.75</b>	UNICOM <b>122.7</b>	CTAF <b>127.05 0</b>
------------------------	--	--	---------------------------	---------------------------	------------------------	-------------------------



4 NM Holding Pattern				
MARNE				
3100 ← 308° 128° → 128° EKIVY WUGHE 2500 *1.6 NM to RWY 13 RWY 13				
GP 3.00° TCH 50 3.7 NM 2.1 NM 4 NM 1.6 NM				
CATEGORY	A	B	C	D
LPV DA	908-¾		250 (300-¾)	
LNAV/VNAV DA	1126-1¼		468 (500-1¼)	
LNAV MDA	1220-1	562 (600-1)	1220-1¾	562 (600-1¾)
CIRCLING	1220-1 562 (600-1)	1240-1 582 (600-1)	1280-1¾ 622 (700-1¾)	1320-2 662 (700-2)