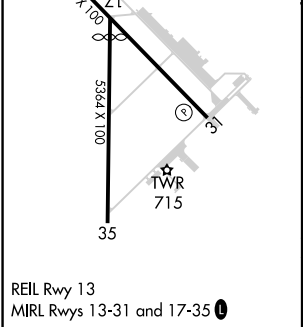
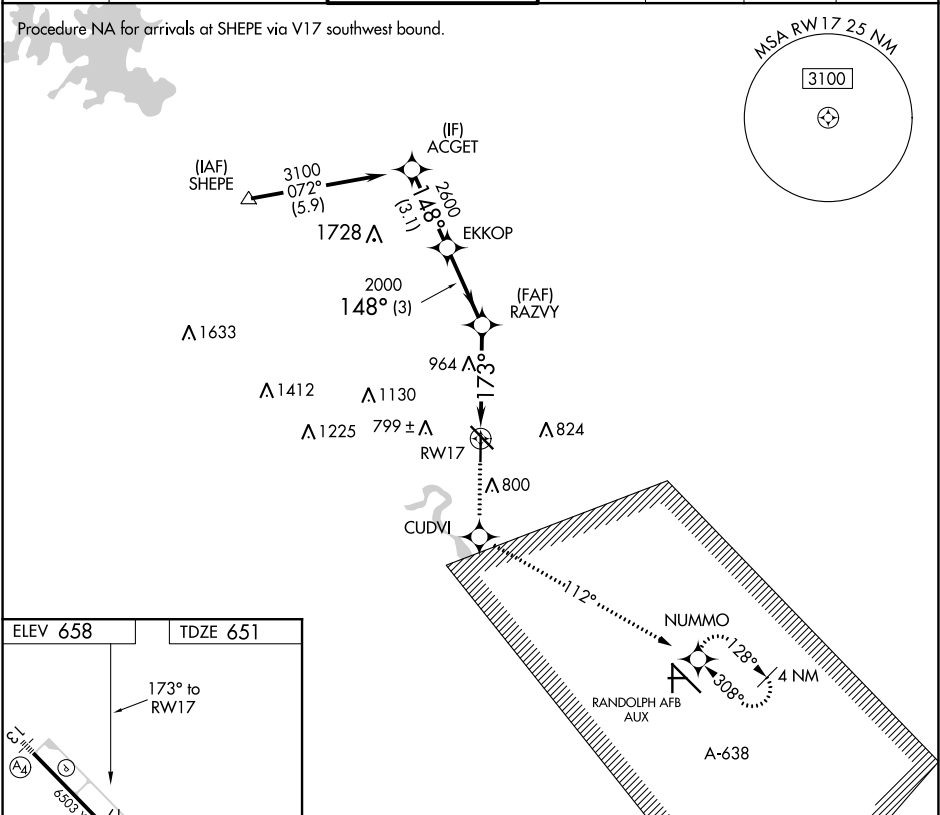


APP CRS	Rwy Idg	4842
173°	TDZE	651
	Apt Elev	658

RNAV (GPS) RWY 17
NEW BRAUNFELS RGNL (BAZ)

RNP APCH.	MISSED APPROACH: Climb to 3500 direct CUDVI and via 112° track to NUMMO and hold, continue climb-in-hold to 3500.
When local altimeter setting not received, use San Marcos Rgnl altimeter setting and increase all MDAs 60 feet and visibility Cat C ¼ SM. VDP NA when using San Marcos Rgnl altimeter setting.	

ATIS 119.325	SAN ANTONIO APP CON 124.45 335.625	NEW BRAUNFELS TOWER ★ 127.05 285.4	GND CON 120.175	CLNC DEL 134.75	UNICOM 122.7	CTAF 127.05 0
-----------------	---------------------------------------	---------------------------------------	--------------------	--------------------	-----------------	------------------



3500	CUDVI	tr 112°	NUMMO
ACGET			
EKKOP			
RAZVY			
RWY 17			
TCH 45			
2000			
2600			
3100			
Procedure Turn NA			
CATEGORY	A	B	C
LNAV MDA	1220-1	569 (600-1)	1220-1½ 569 (600-1½)

SC-3, 31 DEC 2020 to 28 JAN 2021

SC-3, 31 DEC 2020 to 28 JAN 2021