

WAAS CH 93900 W35A	APP CRS 353°	Rwy Idg TDZE 650 Apt Elev 658
--	------------------------	---

RNAV (GPS) RWY 35

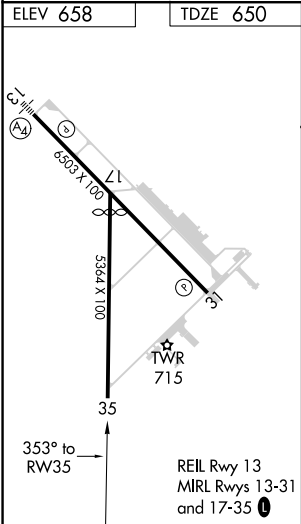
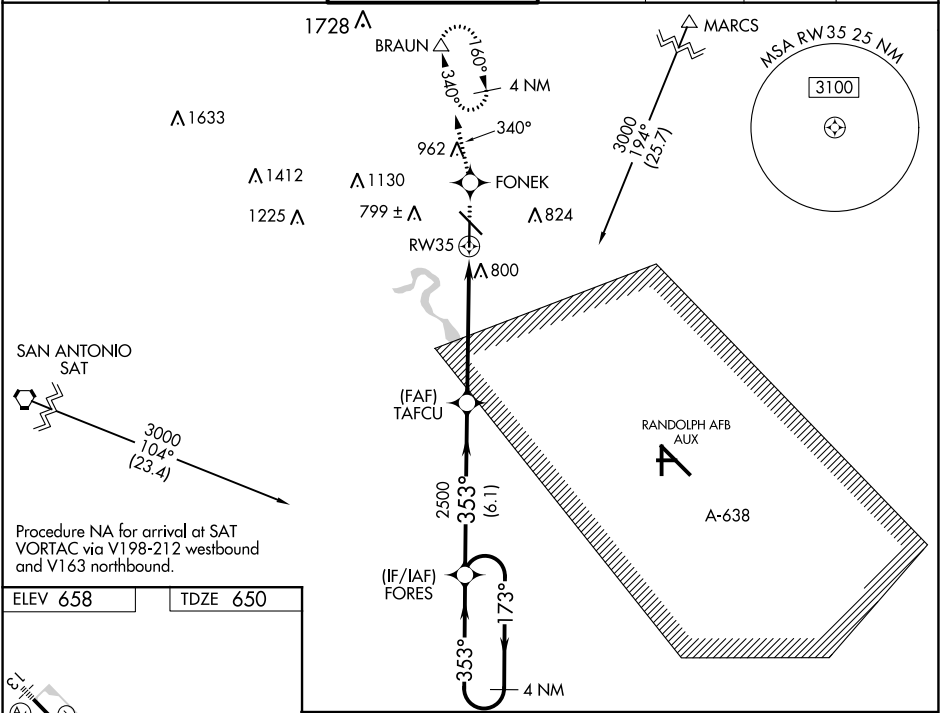
NEW BRAUNFELS RGNL (BAZ)

RNP APCH.

When local altimeter setting not received, use San Marcos Rgnl altimeter setting; increase LPV DA to 972 feet, LNAV/VNAV DA to 1153 feet; increase all MDAs 60 feet and visibility LNAV Cat C and D ¼ SM. Baro-VNAV and VDP NA when using San Marcos Rgnl altimeter setting. For uncompensated Baro-VNAV systems, LNAV/VNAV NA below -16°C (4°F) or above 47°C (116°F).

MISSED APPROACH: Climb to 3100 direct FONEK and via 340° track to BRAUN and hold, continue climb-in-hold to 3100.

ATIS 119.325	SAN ANTONIO APP CON 124.45 335.625	NEW BRAUNFELS TOWER ★ 127.05 285.4	GND CON 120.175	CLNC DEL 134.75	UNICOM 122.7	CTAF 127.05 0
------------------------	--	--	---------------------------	---------------------------	------------------------	-------------------------



4 NM Holding Pattern		FORES	3100	FONEK	BRAUN
3000		173°	353°	tr 340°	△
GP 3.00° TCH 45		2500	*LNAV only.		
		6.1 NM	4.2 NM	1.4 NM	
CATEGORY	A	B	C	D	
LPV DA	929-1		279 (300-1)		
LNAV/VNAV DA	1110-1¾		460 (500-1¾)		
LNAV MDA	1140-1	490 (500-1)	1140-1¾ 490 (500-1¾)	1140-1½ 490 (500-1½)	

SC-3, 31 DEC 2020 to 28 JAN 2021

SC-3, 31 DEC 2020 to 28 JAN 2021