

WAAS CH <b>53708</b> <b>W13A</b>	APP CRS <b>130°</b>	Rwy ldg <b>8001</b> TDZE <b>18</b> Apt Elev <b>19</b>
--	------------------------	---

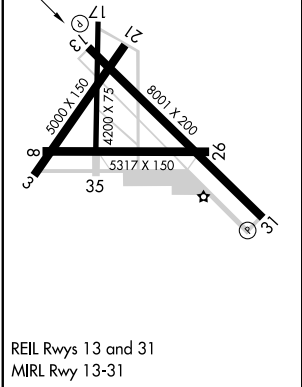
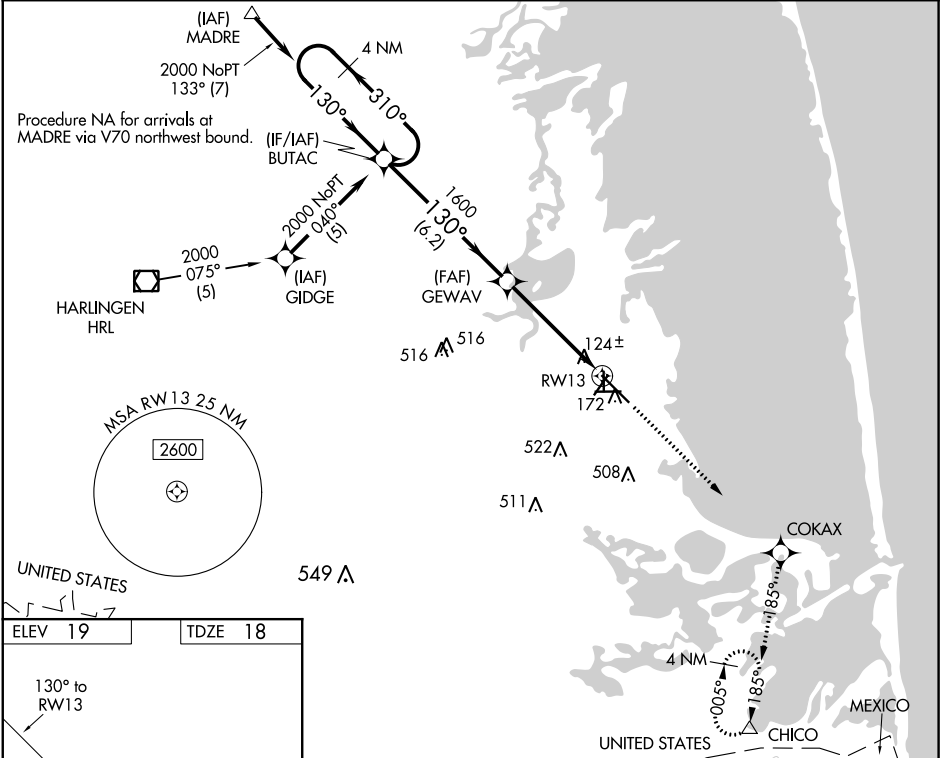
RNAV (GPS) RWY 13  
PORT ISABEL-CAMERON COUNTY (PIL)

RNP APCH

Baro-VNAV NA when using Brownsville altimeter setting. For uncompensated Baro-VNAV systems, LNAV/VNAV NA below -15°C or above 54°C. VDP NA when using Brownsville altimeter setting. When local altimeter setting not received, use Brownsville altimeter setting and increase all DA 38 feet and all MDA 40 feet, increase LPV all Cats, LNAV Cat C, and Circling Cat C visibility ¼ mile. Circling Rwy 3, 8, 17, 21, 26, 35 NA at night.

MISSED APPROACH:  
Climb to 3000 direct COKAX and via 185° track to CHICO and hold.

ASOS <b>118.525</b>	VALLEY APP CON <b>119.5 257.6</b>	CLNC DEL <b>119.2</b>	UNICOM <b>122.8</b> (CTAF)
------------------------	--------------------------------------	--------------------------	-------------------------------



4 NM Holding Pattern BUTAC			
2000 ← 310° 130° → 130° GEWAV			
GP 3.00° TCH 40			
VGSi and RNAV glidepath not coincident (VGSi Angle 2.00° TCH 27°)			
6.2 NM 2.7 NM 2.1 NM			
CATEGORY	A	B	C
LPV DA	376-1¼	358 (400-1¼)	NA
LNAV/VNAV DA	424-1½	406 (500-1½)	NA
LNAV MDA	480-1	462 (500-1)	480-1¼ 462 (500-1¼)
CIRCLING	540-1 521 (600-1)	620-1 601 (700-1)	840-2½ 821 (900-2½)

SC-3, 31 DEC 2020 to 28 JAN 2021

SC-3, 31 DEC 2020 to 28 JAN 2021